



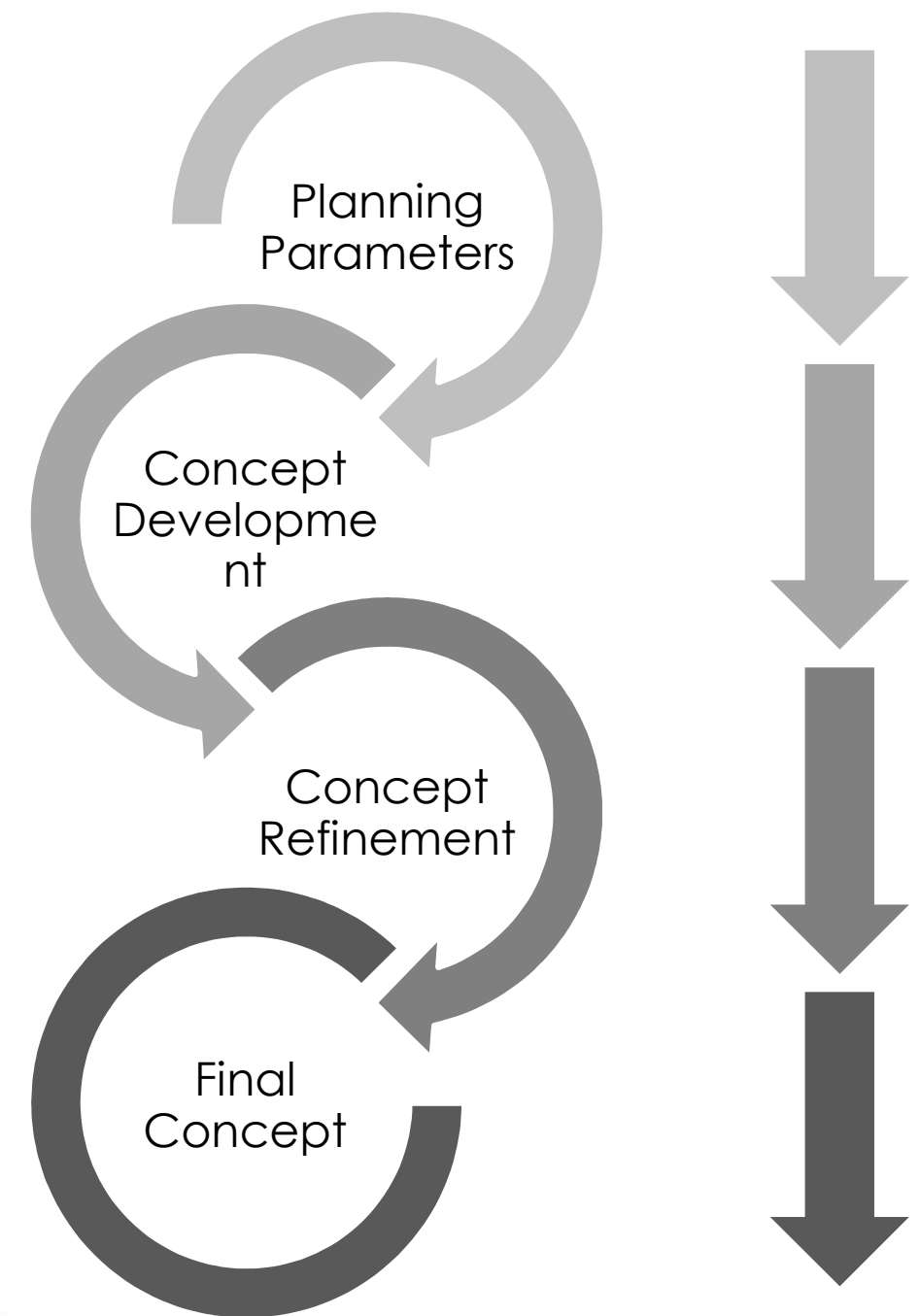
# Los Angeles-San Diego-San Luis Obispo Rail Corridor Agency

Corridor Optimization Study Update  
Technical Advisory Committee  
February 3, 2020

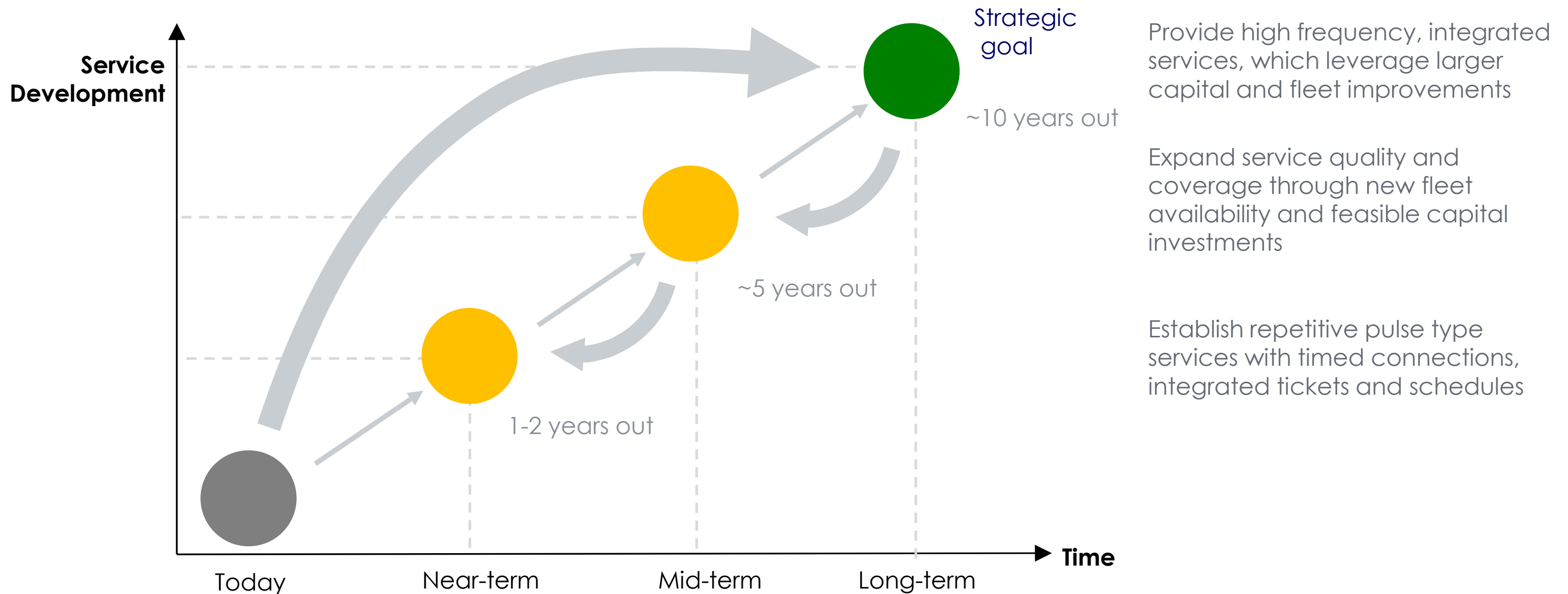
# Project Overview

## Objectives

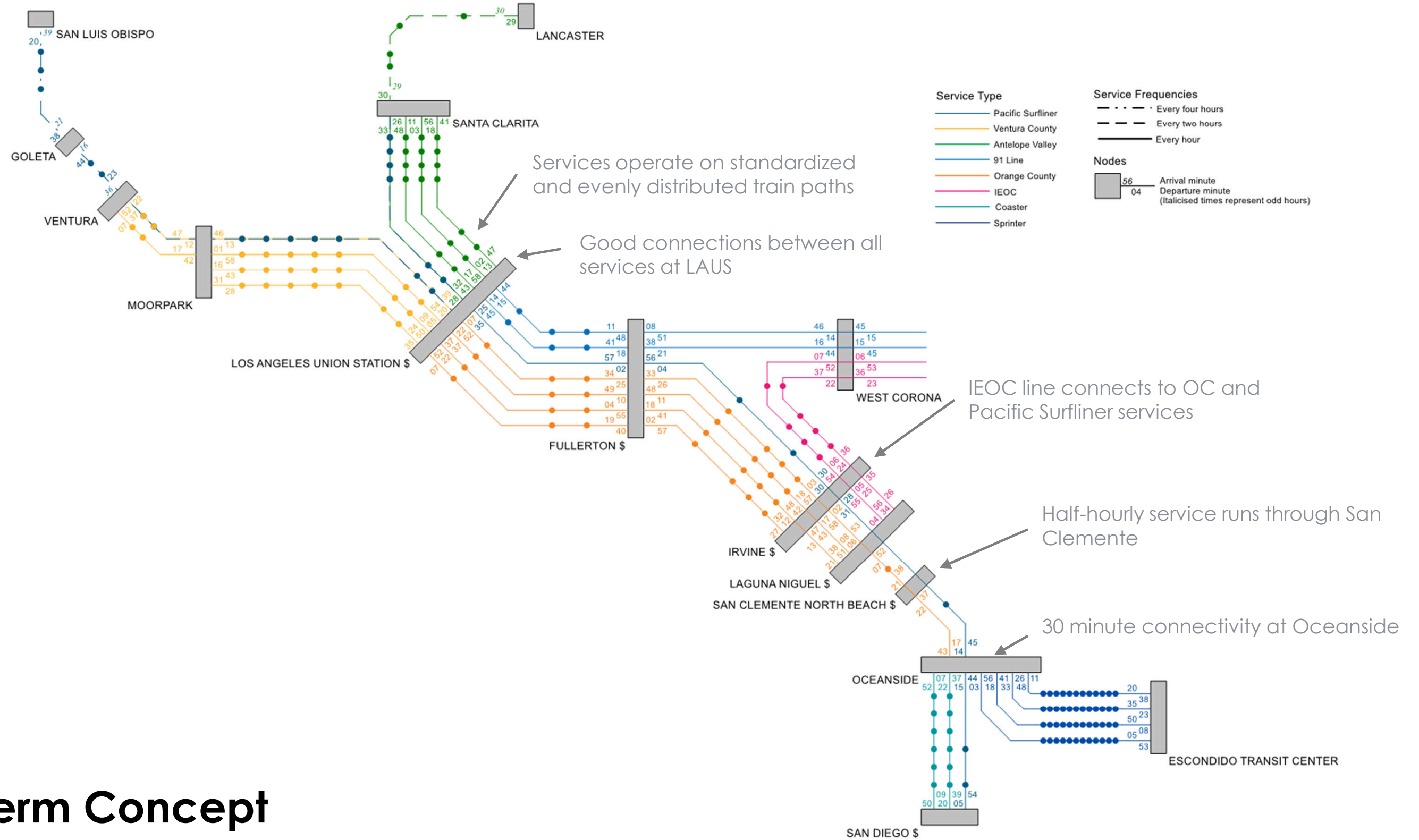
- Run passenger services on repetitive, regular interval schedules to boost service quality and coverage
- Specify operating needs to ensure reliable and robust operations
- Derive and prioritize investment projects
  - Vehicle
  - Infrastructure
  - Benefit from planned investments (LinkUS, Coastal projects, 4-track Hobart-Fullerton)



# Planning Horizons







# Long Term Concept

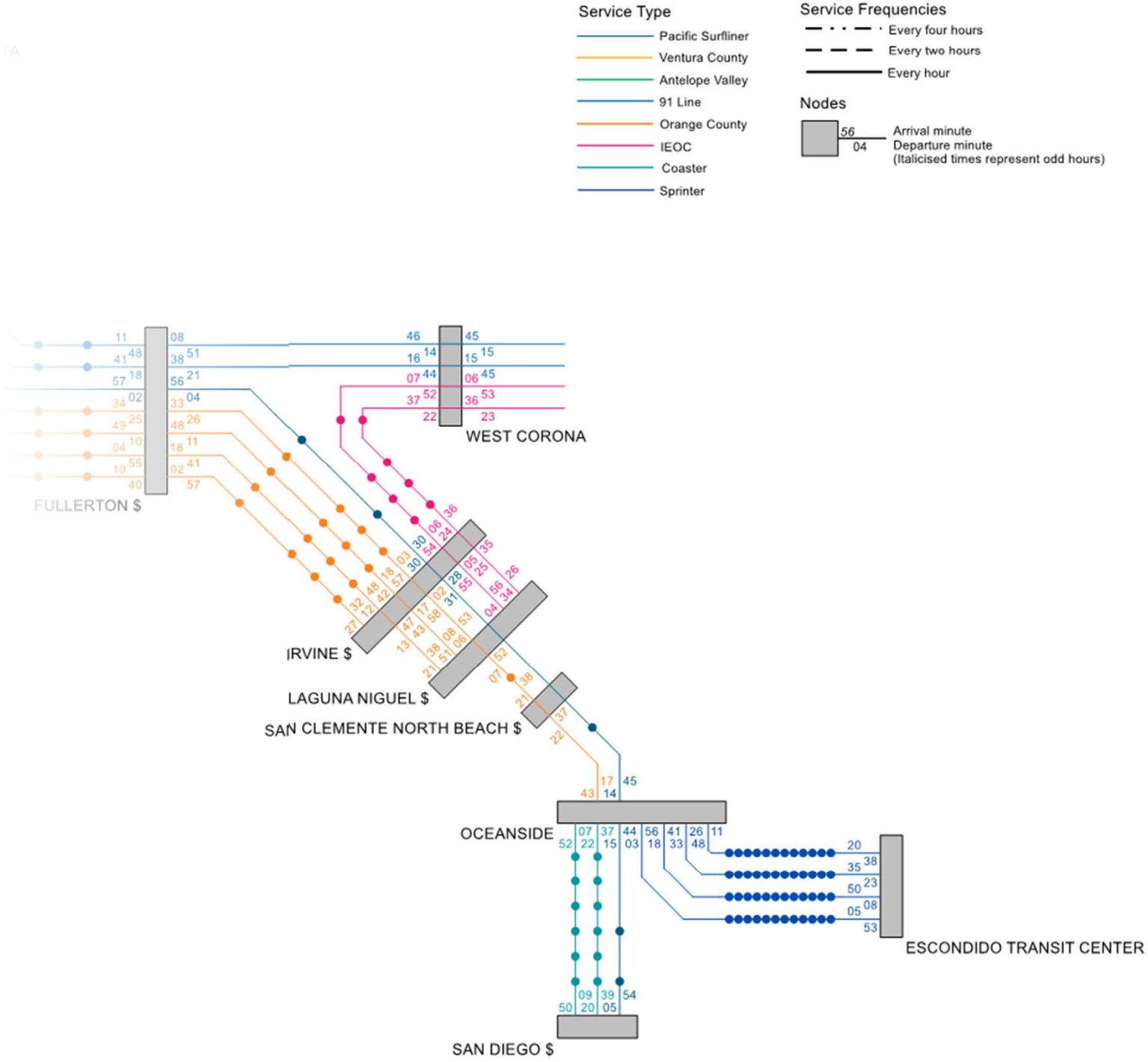
Santa Clarita to Oceanside			Change Trains	Trip Time	Auto Time
05:33	<div><div></div><div></div></div>	08:14	0	2:41	2:00-3:30
05:48	<div><div></div><div></div><div></div></div> <div>Los Angeles Union Station</div>	08:43	1	2:55	2:00-3:50
06:33	<div><div></div><div></div><div></div></div> <div>Los Angeles Union Station</div>	09:14	1	2:41	2:30-4:00
06:48	<div><div></div><div></div><div></div></div> <div>Los Angeles Union Station</div>	09:43	1	2:55	2:30-4:00

Poinsettia to Santa Barbara			Change Trains	Trip Time	Auto Time
06:29	<div><div></div><div></div><div></div></div> <div>Los Angeles Union Station</div>	11:01	1	4:32	3:30-5:10
08:29	<div><div></div><div></div><div></div></div> <div>Los Angeles Union Station</div>	13:01	1	4:32	3:00-4:10
10:29	<div><div></div><div></div><div></div></div> <div>Los Angeles Union Station</div>	15:01	1	4:32	2:50-3:50
12:29	<div><div></div><div></div><div></div></div> <div>Los Angeles Union Station</div>	17:01	1	4:32	2:50-4:10

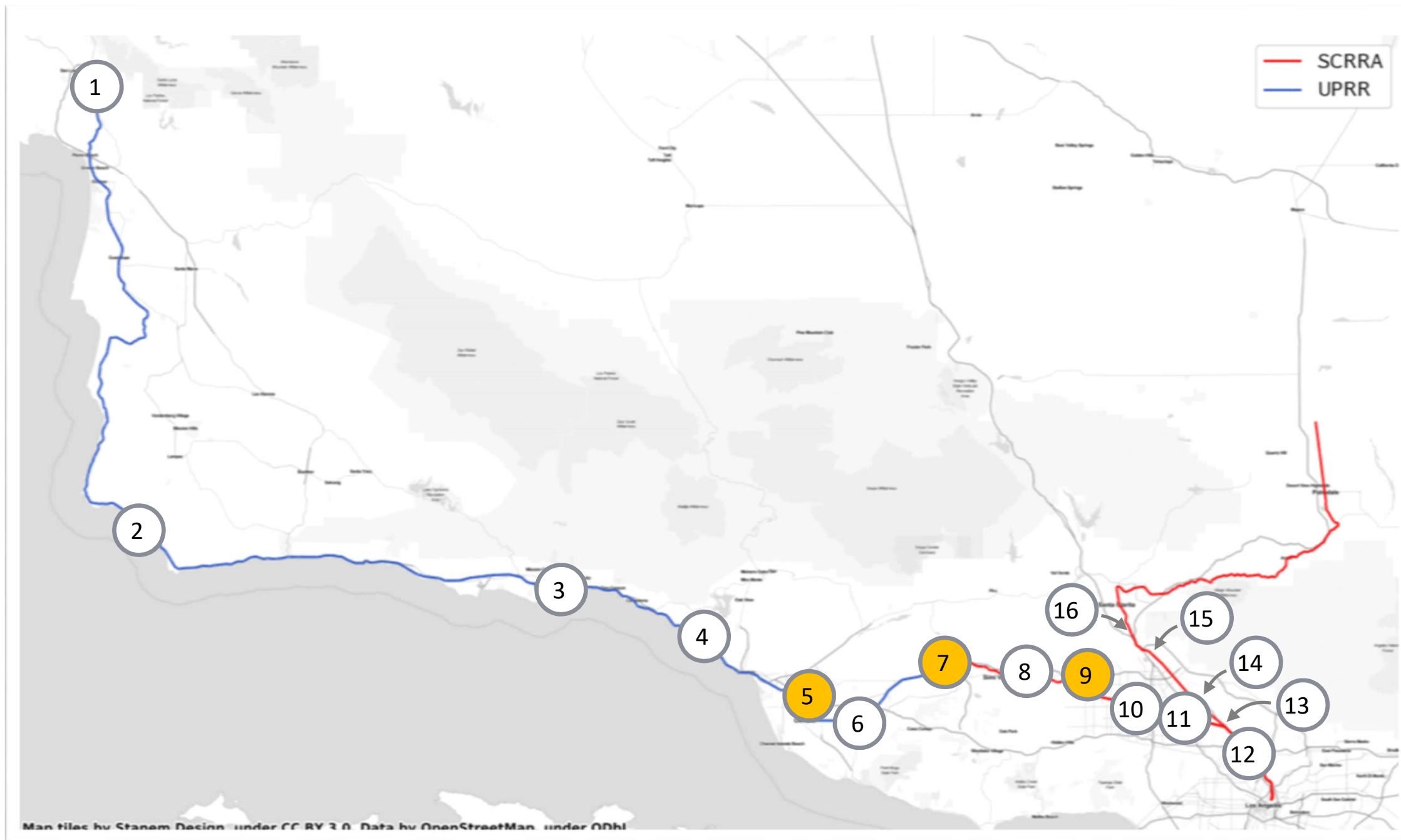
San Bernardino to San Diego		Change Trains	Trip Time	Auto Time	
05:20	<div><div></div><div></div><div></div><div></div></div> <div>IrvineOceanside</div>	08:50	2	3:30	1:50-3:20
05:50	<div><div></div><div></div><div></div></div> <div>Irvine</div>	09:05	1	3:15	2:00-3:10
06:20	<div><div></div><div></div><div></div><div></div></div> <div>IrvineOceanside</div>	09:50	2	3:30	2:00-3:00
06:50	<div><div></div><div></div><div></div></div> <div>Irvine</div>	10:05	1	3:15	1:50-2:50

LANCASTER

TA

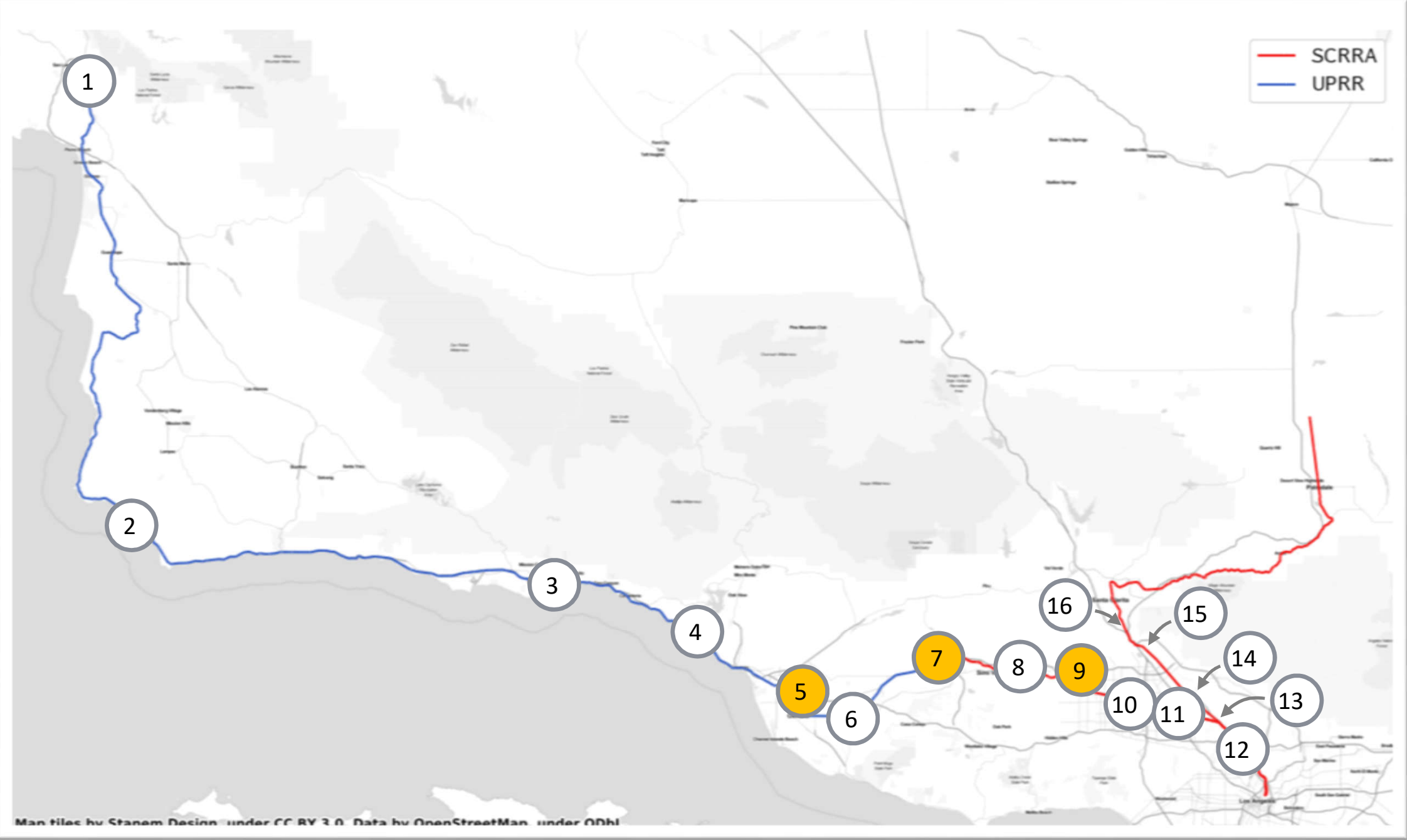


# Project on LOSSAN North Corridor



Project		Reason
1	San Luis Obispo Layover Expansion	Fleet and end of line starts
2	CTC and siding upgrades	Allow faster and reliable train meets
3	Goleta Layover Expansion	Fleet and mid corridor starts
4	Seacliff/ Ortega siding	Improved delay mitigation
5	Montalvo	Passenger meets
6	Camarillo Station improvements	Improved delay mitigation
7	Moorpark	Passenger turns (15 mins freq)
8	Simi Valley	Passenger meets (15 mins freq)
9	Chatsworth tunnel	Provide 15 min frequencies
10	Chatsworth station	Remove holdout rule for train meets
11	CP Raymer to CP Bernson	15 min frequencies
Newly identified project		

# Project on LOSSAN North Corridor

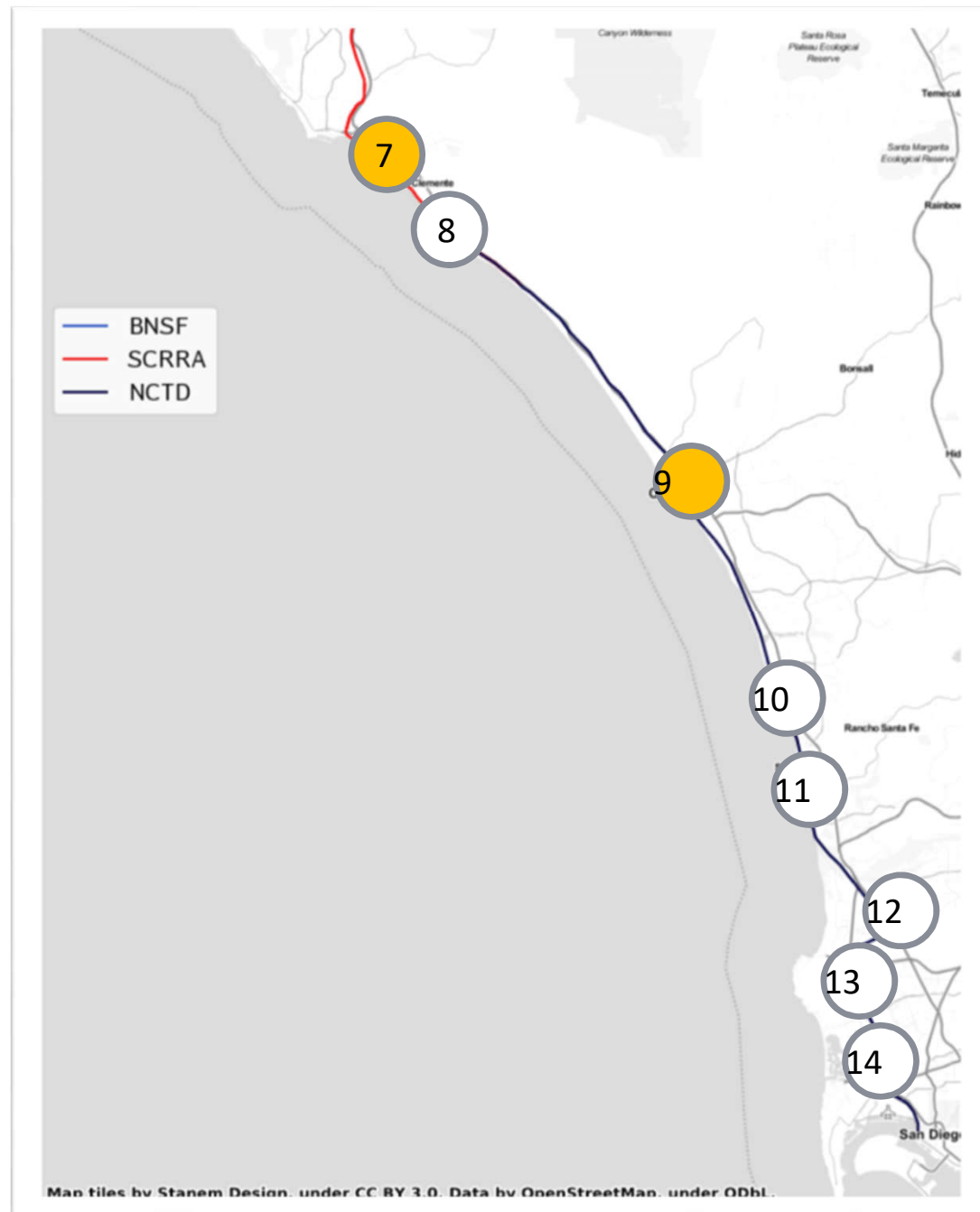


Project		Reason
12	Resignaling projects	3 min separation times where needed
13	Burbank Jct. Speed improvements	Capacity on the AVL line
14	Double track Burbank Airport North and extend siding near CP Sheldon	15 min frequencies
15	Accelerate tunnel/ extend siding near Balboa /Portal	15 min frequencies
16	Extend double track at CP Saugus	15 min frequencies

 Newly identified project



# Project on LOSSAN South Corridor

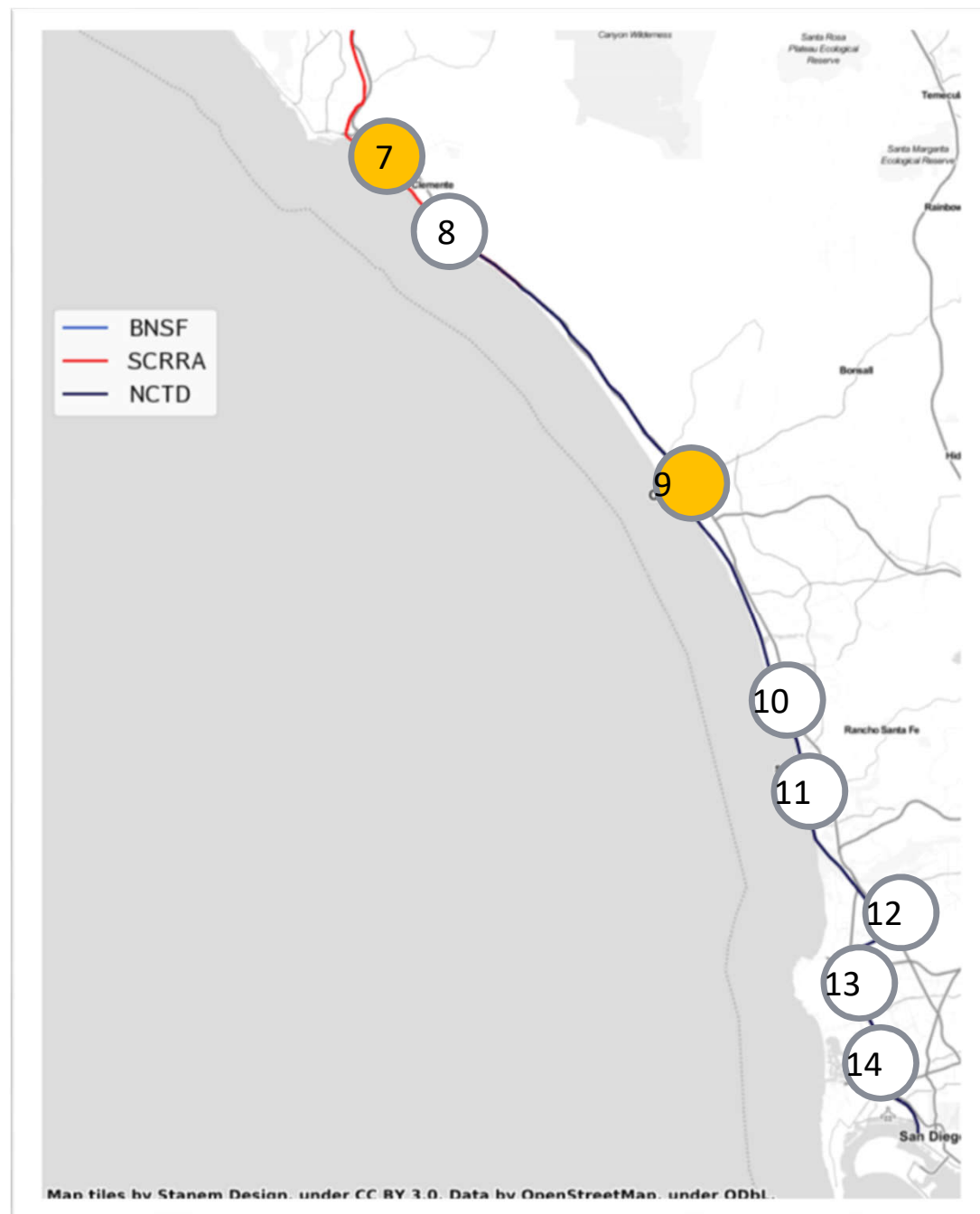
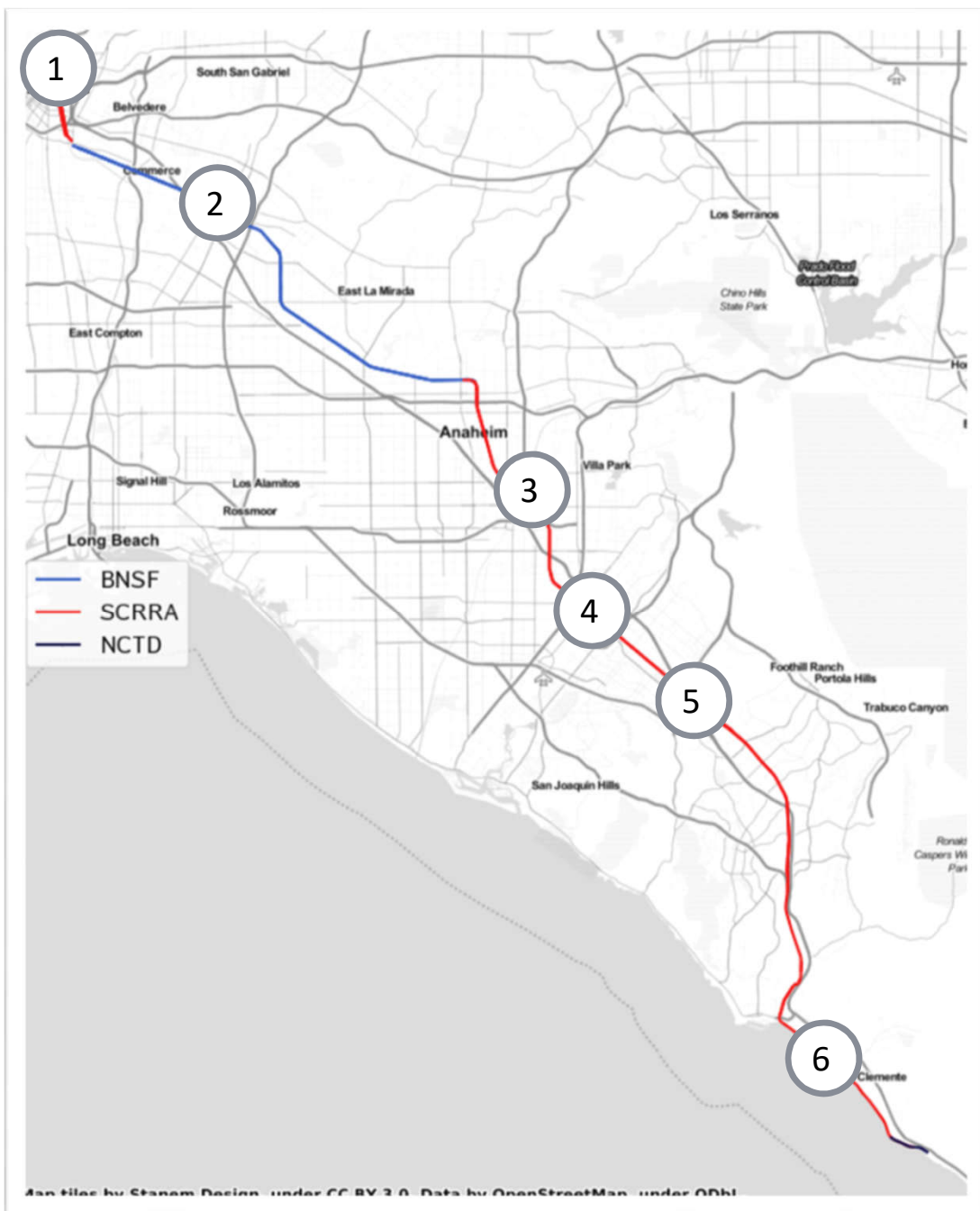


Project		Reason
1	LinkUS	Through tracks improved operations
2	Increased capacity on the BNSF Sub	Increased passenger slots
3	Orange/ Olive junction upgrade	Allow parallel train movements
4	Resignaling projects	3 min separation times where needed
5	Irvine station expansion	Turn trains and facilitate transfers
6	Serra siding extension	30 minute passenger service
7	Speed improvements	Reduce bottleneck impact
8	Repositioning of CP Songs	Reduce bottleneck impact
9	Oceanside station	Improve transfers between services
10	CPs Ponto-Swami	Passenger meets

Newly identified project



# Project on LOSSAN South Corridor



Project		Reason
11	San Dieguito double track	Passenger meets
12	Miramar phase 2	Passenger meets
13	Elvira to Morena double track	Passenger meets
14	Old town station improvements	Improve transfers between services

 Newly identified project

# Project Timeline

