



# Los Angeles-San Diego-San Luis Obispo Rail Corridor Agency

Capital Projects and Programming Update  
Technical Advisory Committee  
May 7, 2020

# LOSSAN Capital Program

The Los Angeles - San Diego – San Luis Obispo (LOSSAN) Rail Corridor Agency (Agency) has evolved over past seven years into an implementation agency.

- Coordinate, fund, and lead projects along the LOSSAN rail corridor
- Capital Program includes large capital projects, but also many small amenity and passenger focused projects.

# Capital Projects

Project	Estimated Cost	Project	Estimated Cost
Bridge Replacements / Infrastructure Enhancements	\$103.9M	Goleta Layover Facility Expansion	\$10.2M
Carpinteria Second Track and Platform	\$31.9M	Camarillo Station Improvements	\$7.8M
CTC / Powered Sidings	\$29.2M	Various State of Good Repair / Match / Safety Improvements	\$3.8M
San Diego County Maintenance and Layover Facility (Phase 1)	\$28.7M	Interim San Luis Obispo Layover Facility Expansion	\$1.6M
Central Coast Layover Facility Expansion (Phase 1)	\$26.3M	Various Facility Improvements	\$1.6M
Leesdale Siding Upgrade and Extension	\$26.1M	Various Corridor Optimization Projects	\$608K
Seacliff Siding Extension	\$20.5M	Various Passenger Amenity Upgrades	\$597K
Corridor Hardening Improvements / Safety Improvements	\$10.7M	Bi-Level Equipment Procurement /Overhaul *	TBD
<b>TOTAL CAPITAL PROGRAM</b>		<b>\$303.5 MILLION</b>	

# Capital Projects

- Several projects are underway and in various stages of planning, design, or construction

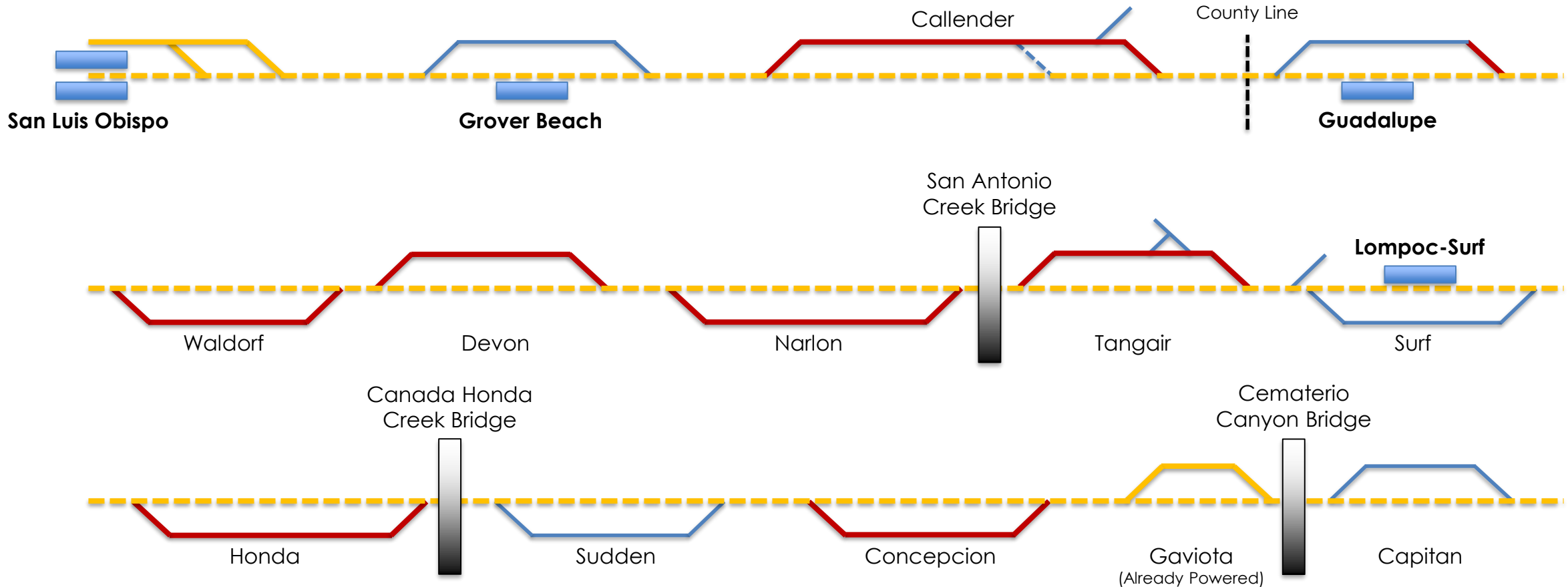
Project	Phase
CTC / Powered Sidings	Design
Goleta Layover Facility Expansion	Design
Bridge Replacements / Infrastructure Enhancements	Design / Construction
Central Coast Layover Facility Expansion (Phase 1)	PAED
Interim San Luis Obispo Layover Facility Expansion	Design
San Diego County Maintenance and Layover Facility (Phase 1)	Planning

# Capital Projects

- Centralized traffic control (CTC)/ Powered Sidings + Bridges + Infrastructure Enhancements
  - Design and installation of CTC between Goleta and San Luis Obispo
  - Powering of siding / CTC installation on seven sidings between Goleta and San Luis Obispo
  - Replacement of three (3) bridges between Goleta and San Luis Obispo
  - Tie and Rail Replacement (70+ years old) between Goleta and San Luis Obispo
  - Design and implementation of signal optimization project between Oceanside and San Diego (NCTD)

# Capital Projects

- CTC/ Powered Sidings + Bridges + Infrastructure Enhancements



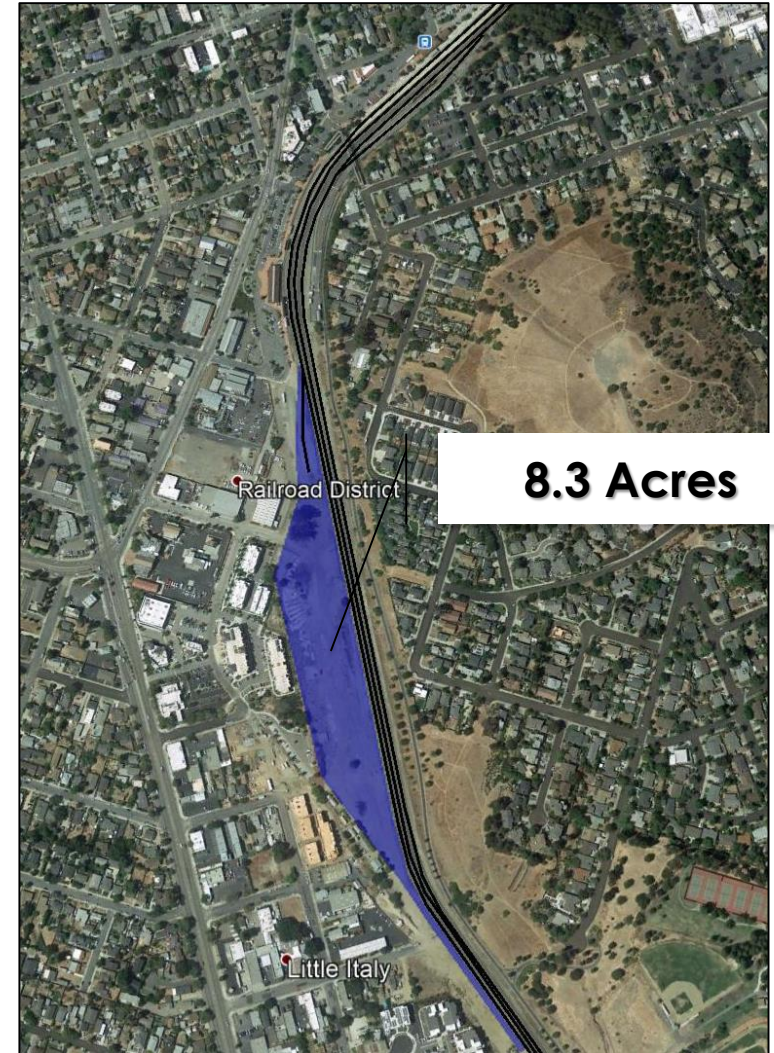
# Capital Projects

- Goleta Layover Facility Expansion
  - Design work order executed through Amtrak
  - Coordinating Preliminary Engineering (PE) Agreement with Union Pacific
  - Scheduling initial meeting with Amtrak and Union Pacific Railroad (UPRR) to discuss concepts
  - Project will design and construct expansion allowing one additional trainset to layover



# Capital Projects

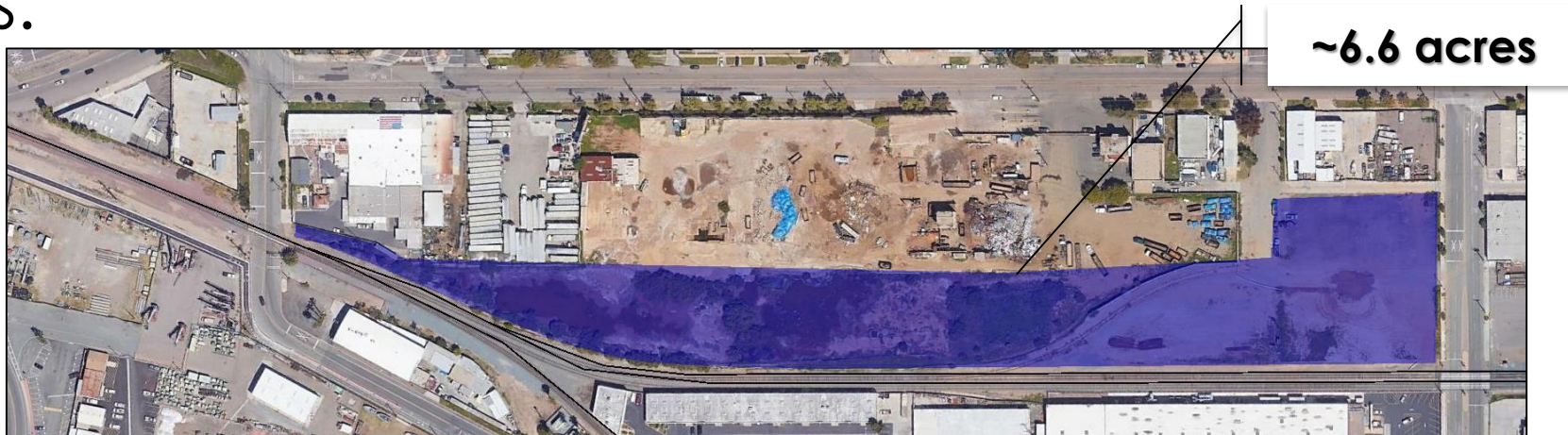
- Central Coast Layover Facility
  - Underway with PAED phase
  - Coordinating PE Agreement with Union Pacific and soliciting their input on site selection study
  - Possible virtual design charrette with stakeholders at the end of May or early June.





# Capital Projects

- San Diego County Maintenance and Layover Facility
  - Completing site selection study
  - Received 2020 Transit and Intercity Rail Capital Program (TIRCP) funding
  - Will be coordinating with stakeholders to define next steps.



# Programmed Funding

- TIRCP - \$154.2M
- Proposition 1B Intercity Rail (Prop 1B) - \$35M
- State Rail Assistance (SRA) - \$12.7M
- State Transportation Improvement Program (STIP) - \$11.5M
- Other / Local - \$3.2M

**Total Programmed Funding - \$216.6M**

**Remaining Funds Needed - \$86.9M**

# Unfunded or Partially Funded Projects

Project	Estimated Cost	Funded Amount	Unfunded Amount
Bridge Replacements / Infrastructure Enhancements - UPRR bridge replacements - NCTD Signal Respacing and Optimization - UPRR Tie and Rail Replacement	\$103.9M	\$85.9M	\$18.0M
Carpinteria Second Track and Platform *	\$31.9M	\$10.6M	\$21.3M
Central Coast Layover Facility Expansion (Phase 1)	\$26.3M	\$25.3M	\$1M
Leesdale Siding Upgrade and Extension	\$26.1M	\$0	\$26.1M
Seacliff Siding Extension	\$20.5M	\$0	\$20.5M
<b>TOTAL CAPITAL PROGRAM FUNDING</b>	<b>\$208.7M</b>	<b>\$121.8M</b>	<b>\$86.9M</b>

# Questions?