

# SCORE Projects on LOSSAN South Corridor

## LOSSAN TAC Meeting

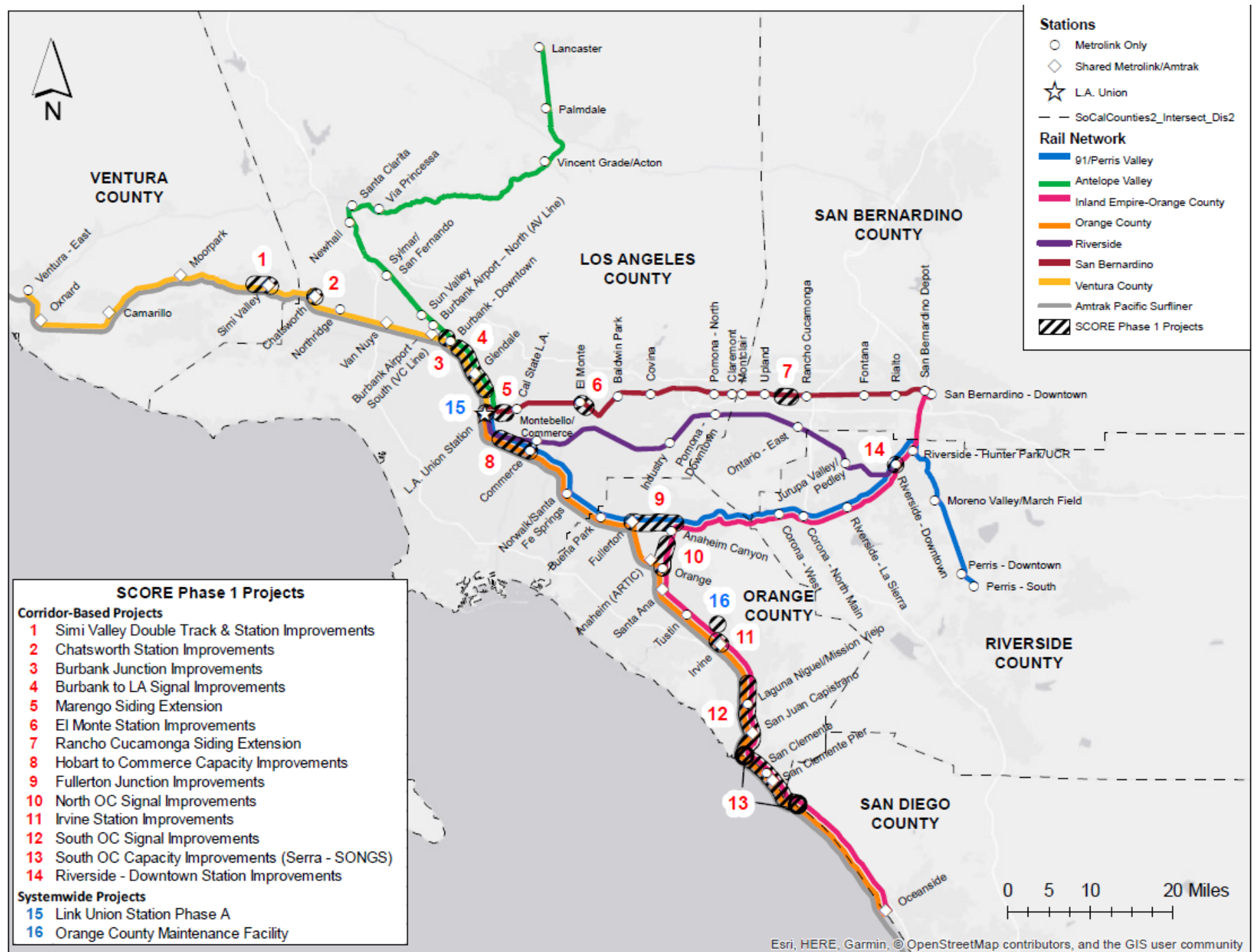
*May 2020*



METROLINK.

CUSTOMER FIRST: Safety & Security • An Integrated System • Modernizing Business Practices

# SCORE Phase 1 Projects Map



# Orange County Maintenance Facility



- New Maintenance Facility on 21.3-acre parcel between MPs 183.5 and 184.0
- Contributes to enabling 15-minute service headways
- Currently building single storage rack – target completion end August 2022
- Commencing Environmental and Design Phases
- Target Construction Completion in 2027
- Project is being led by OCTA



# Irvine Station Project

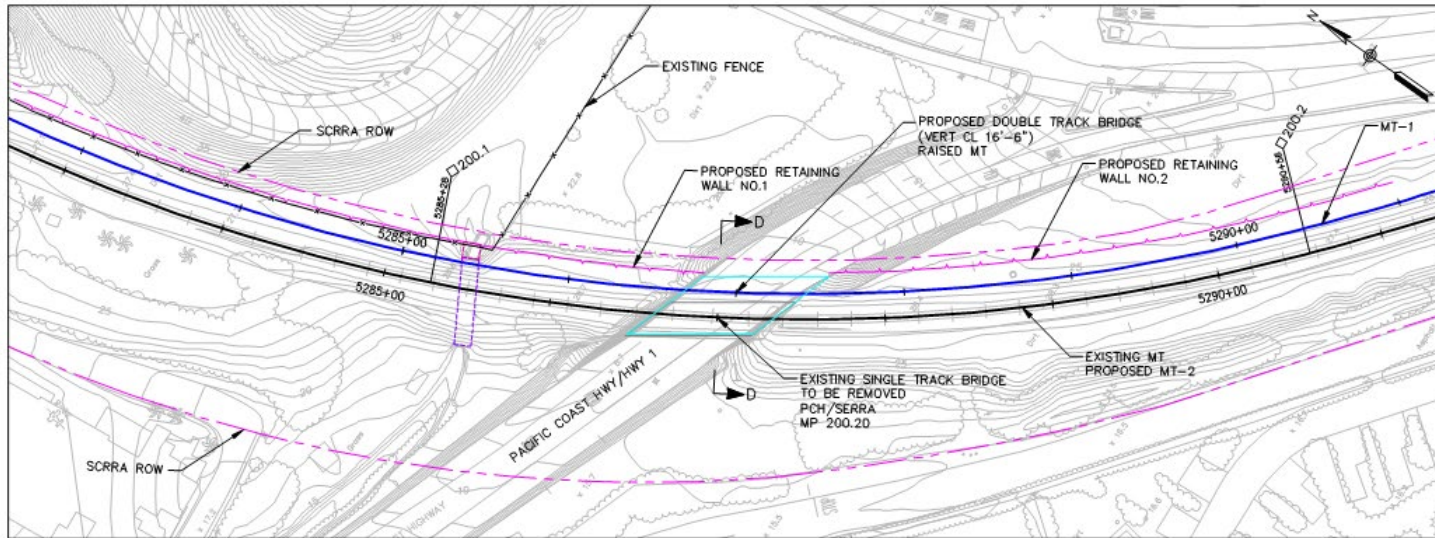


- Two new center platforms connected via new pedestrian underpass
- Two new Main Tracks between MPs 184.0 and 186.9
- Contributes to enabling 30-minute service headways
- Commencing Environmental and Design Phases
- Target Construction Completion in 2027
- Project is being led by OCTA





# Serra Siding Extension



- Extend current siding from MP 199.5 to MP 201.0
- Contributes to enabling 30-minute service headways
- Environmental and Design Phases currently underway
- Target Construction Completion in 2025
- Project is being led by Metrolink



# Signal Respacing – CP Avery to CP Songs



- Adds 6 new intermediate signals
- Contributes to enabling 30-minute service headways
- Environmental and Design Phases currently underway
- Target Construction Completion in 2022
- Project is being led by Metrolink





# Thank you!





# DB Pathing Studies Update

**BNSF PASSENGER OPERATIONS**

**TAMARA NOEL & CINDY STONE**

**JUNE 4, 2020**





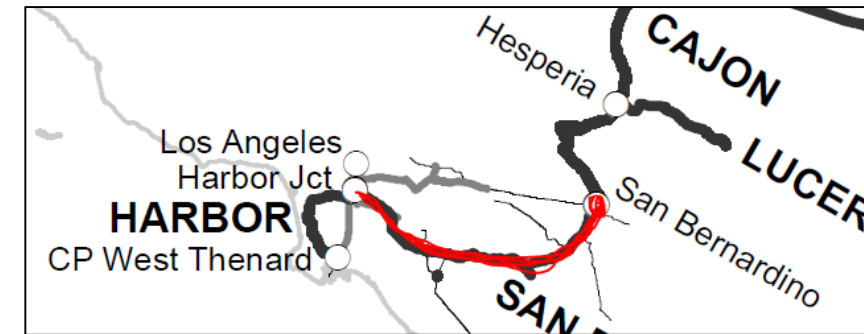
# Los Angeles / San Bernardino Pathing Study



The study is intended to identify train paths to guide advanced signal system planning needed to accommodate freight and passenger train service growth.

## Study Goals:

- Define number of paths today and into the future based on expected service plans in the future.
- Identify capacity improvements that would support the number of paths necessary to support future growth.
  - Project Groups:
    - **Growth** (*what must be built to continue freight operations through the study periods plus accommodate higher passenger train counts*).
      - **Example:** New signal system construction to enable closer headways between trains to facilitate higher train counts.
    - **Relocation** (*what current BNSF facilities must be relocated in light of other improvements being constructed to support growing passenger train counts*).
      - **Example:** Commerce station relocation to eliminate commuter / freight train conflicts with Commerce Yard operations, and to accommodate the construction of the I-5 to I-710 Flyover.



## Study Assumptions:

*The study assumes service objectives established by-*

- 2030 – 2040 Consolidated Passenger Service Plan
- Interim Metrolink Service Plan
- LOSSAN Optimization Study

## Study Timeline:

- Set to begin June 1, 2020 and last for a duration of 5 months.

# CP Atwood / San Diego Pathing Study

The study identifies capital investments to support freight growth to the Port of San Diego and passenger extensions south of the Santa Fe Depot.

## Study Goals:

- Identify freight paths from CP Atwood to the Port of San Diego that are compatible with passenger operations.
- Extend passenger services south of the San Diego Santa Fe Depot.

The study adopts the methodology established by the LOSSAN Optimization Study.

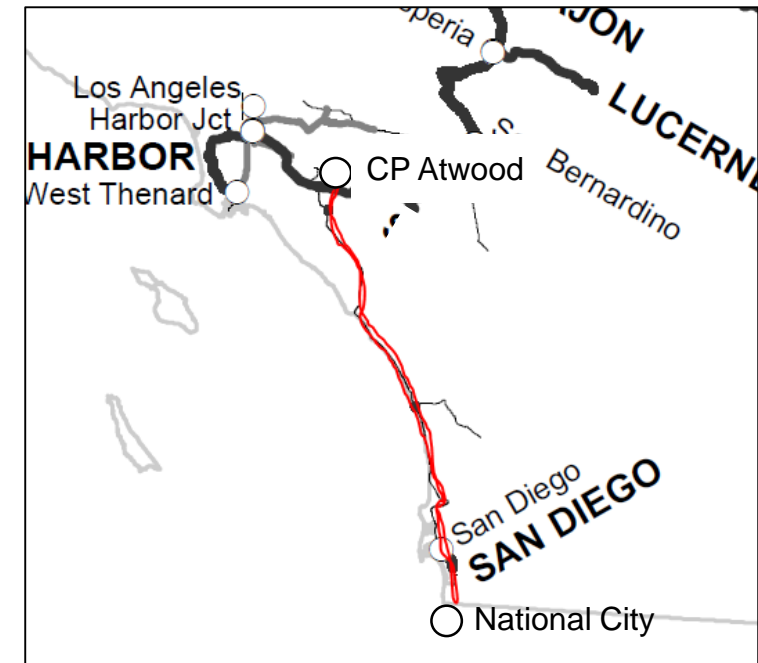
Capital improvement		Service and operational benefit
Elvira to Morena double track Laguna Niguel - San Juan Capistrano siding	Near-term	3 freight train round-trips per day <sup>1</sup> 1.5 passenger train round-trips per off-peak hour <sup>1</sup>
CP Songs relocation to MP 207 San Dieguito double track project Track and signal upgrades to a new Convention Center station with pocket track	Mid-term	5 freight train round-trips per day <sup>1</sup> 1.5 passenger train round-trips per off-peak hour <sup>1</sup> Passenger extensions to Convention Center
LOSSAN Optimization projects Potential staging tracks Track and signal upgrades to National City 22nd St yard lead extensions and runaround track	Long-term Pre-San Clemente	8 freight train round-trips per day <sup>1</sup> OR LOSSAN Optimization study passenger goals <sup>1</sup> Passenger extensions to National City
Serra siding extension and San Clemente station improvement	Long-term Post-San Clemente	8 freight train round-trips per day <sup>1</sup> AND LOSSAN Optimization study passenger goals AND additional capacity for peak trains

## Key

Mainline improvements and benefits

South of San Diego improvements and benefits

(1) Measured for off-peak hours 09:00 - 15:00 and 20:00 - 00:00 through the San Clemente single-track section





**BNSF**  
RAILWAY



DED





# LOSSAN

## Coastal Rail Corridor

San Diego Segment

Los Angeles • San Diego • San Luis Obispo



Building Today. Boarding Tomorrow.

LOSSAN Rail Corridor Agency – Technical Advisory Committee  
Status Update: June 4, 2020

[KeepSanDiegoMoving.com](http://KeepSanDiegoMoving.com)



# LOSSAN: San Diego Subdivision



- 60.1 miles of the 351-mile LOSSAN Corridor
- NCTD owns, operates, and maintains
- MTS owns
- SANDAG implements capital improvements and planning



# Service-based Planning



- 20-30 minute peak period commuter service / hourly off peak period service
- Hourly intercity service
- Additional freight service
- Corridorwide Optimization Study





# LOSSAN Program Summary

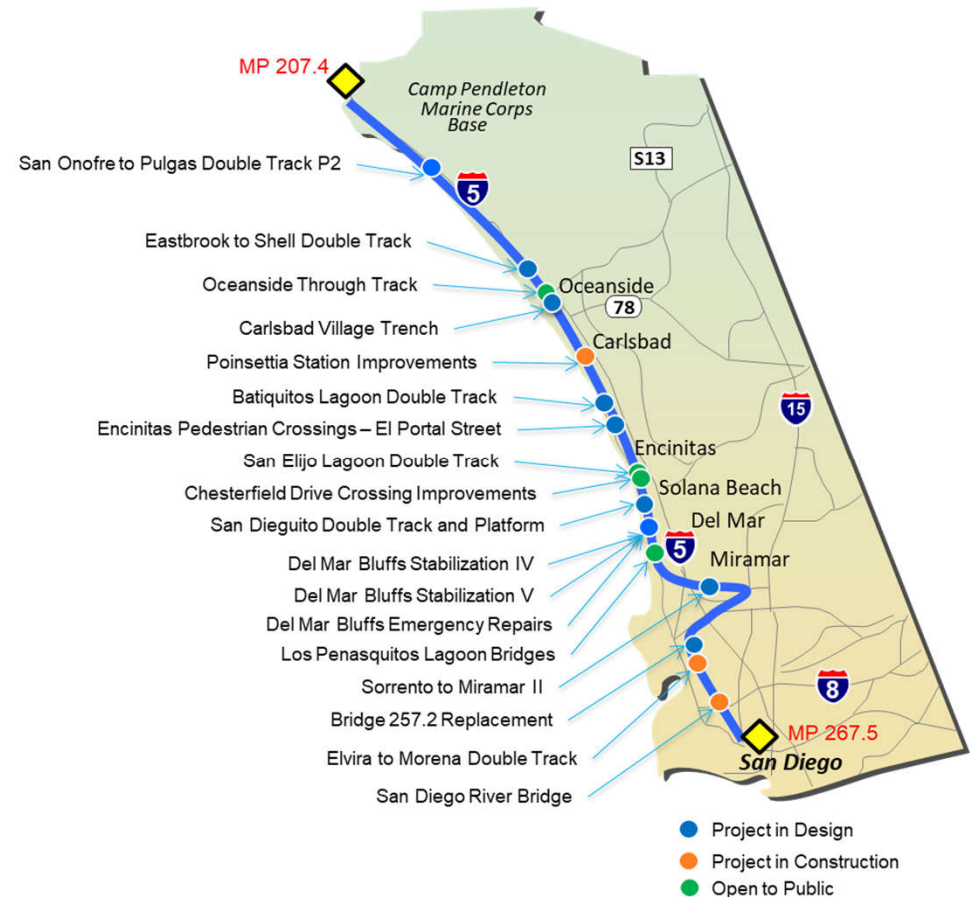
## 18 Active Projects:

- 4 in planning
- 9 funded through final design and permitting
- 2 funded through construction
- 3 in construction

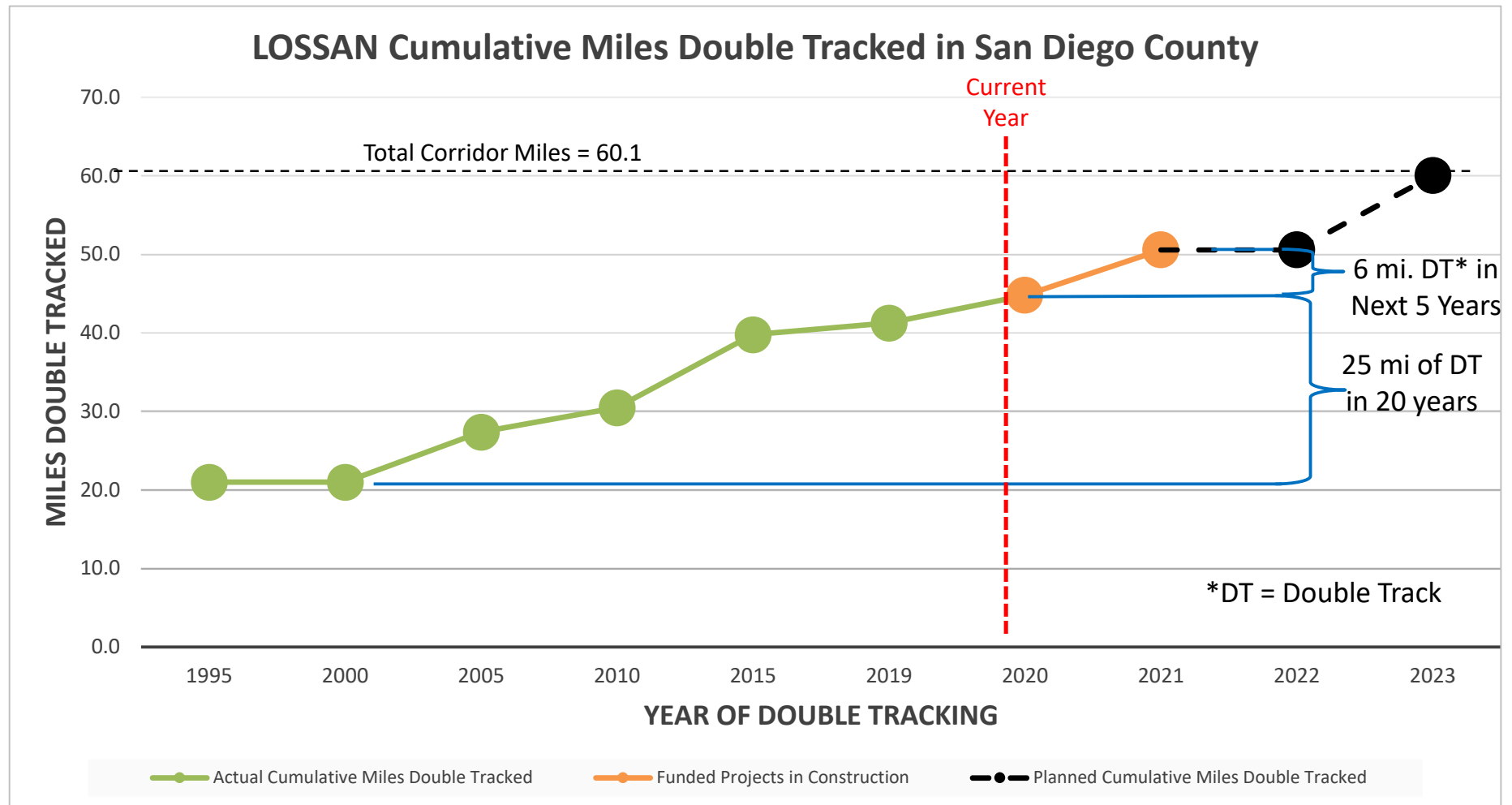
## 14 Projects Open

**Funded to date: \$884 M**

**Needed: \$1,000 M**



# LOSSAN Double Track Progress



# Construction Project Status



# Poinsettia Station Improvements



## Improvements:

- New pedestrian underpass
- Increase platform length
- Added inter-track fence

Project Budget: \$34m

## Project Status:

- Hold Out Rule has been lifted
- Underpass & platforms in use
- Ribbon cutting: February 2020



# Elvira to Morena Double Track



## Improvements:

- Add 2.6 miles of double track
- Replace four bridges

Project Budget: \$183 million

## Project Status:

- Construction began Jan. 2017
- Complete October 2020



# San Diego River Bridge and Double Track



## Improvements:

- Replaced San Diego River Bridge
- Adding 0.9 mile of double track

Project Budget: \$90 million

## Project Status:

- Construction began Sept. 2016
- Open to public February 2020



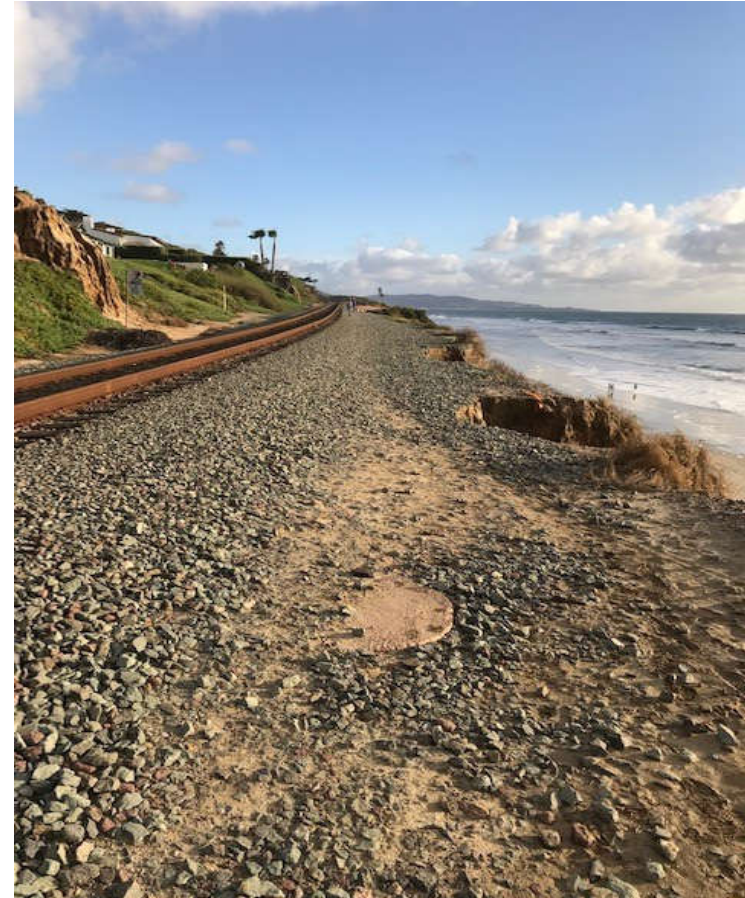


# Del Mar Bluffs Stabilization

# Del Mar Bluffs Stabilization

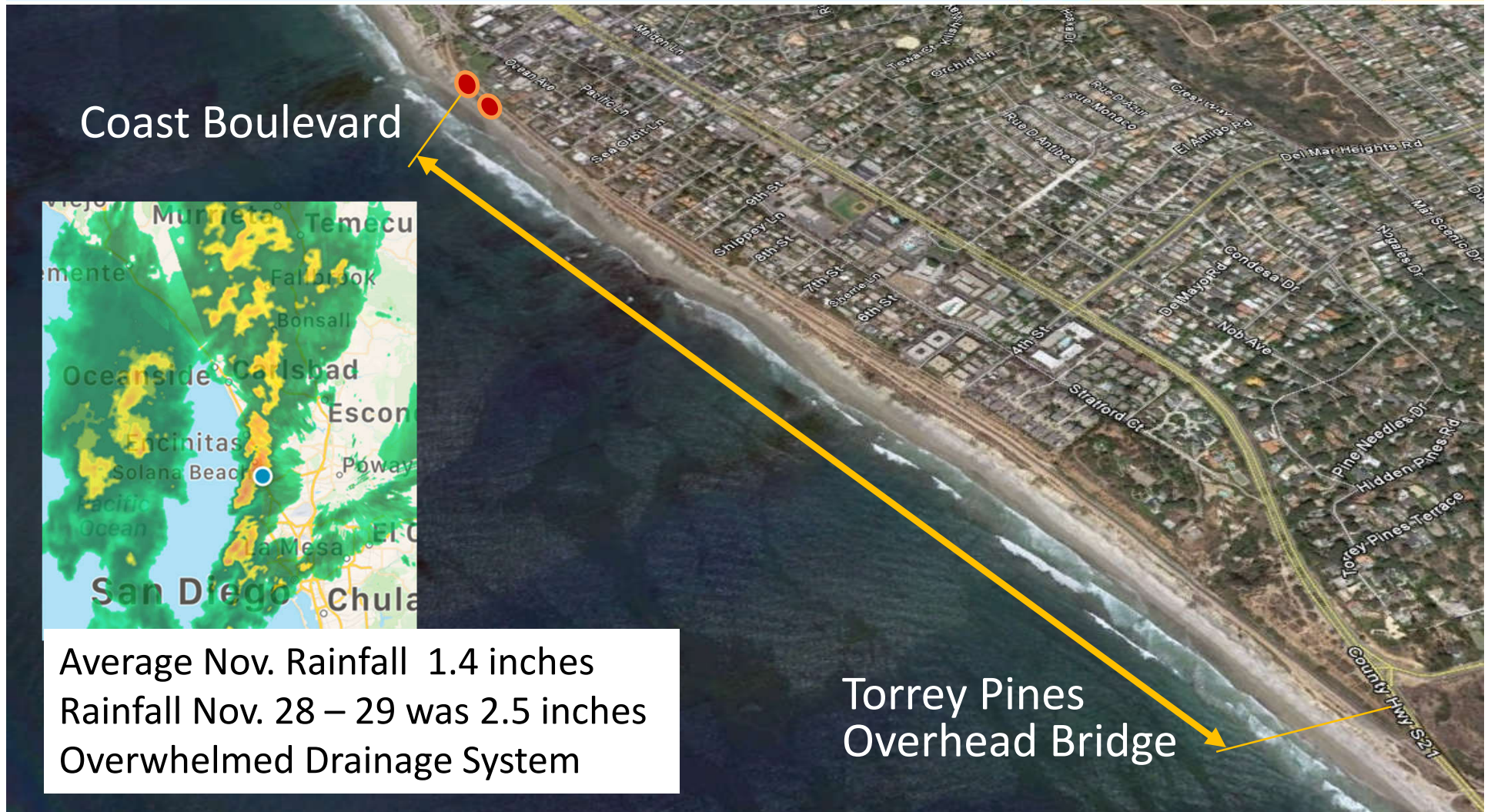


1. **Emergency Repairs**
2. **Short Term:** Phase 4  
(in construction)
3. **Mid Term:** Prioritization of  
future bluff stabilization  
(Phases 5 and 6)
4. **Long Term:** Realignment/  
Tunnel options





# Del Mar Bluffs Emergency Project Location of washouts Repair (●)





# DMB Emergency Project

## Storm damage west of 14th Street



November 28-29, 2019

# Del Mar Bluffs Emergency Repairs



## Remediation:

- Steel plates installed between existing piles
- Retaining wall installed between existing concrete piles

## Schedule:

- Repairs completed November-December 2019





# Del Mar Bluffs Stabilization 4 Urgent Repairs

## Improvements:

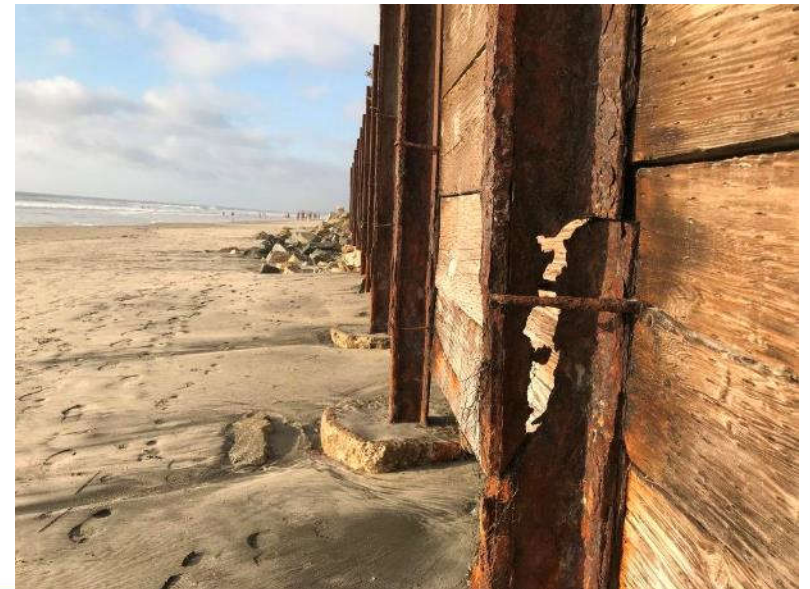
- Repair existing drainage structures
- Replace piles supporting sea walls

## Project Budget: \$6.2m

- Construction funded by STIP and CA Natural Resources Agency

## Project Status:

- Construction start May 2020





# Stabilize Headwall MP 244.3



Rockscape headwall with soil nail tiebacks



# Storm Chute below 12<sup>th</sup> St.

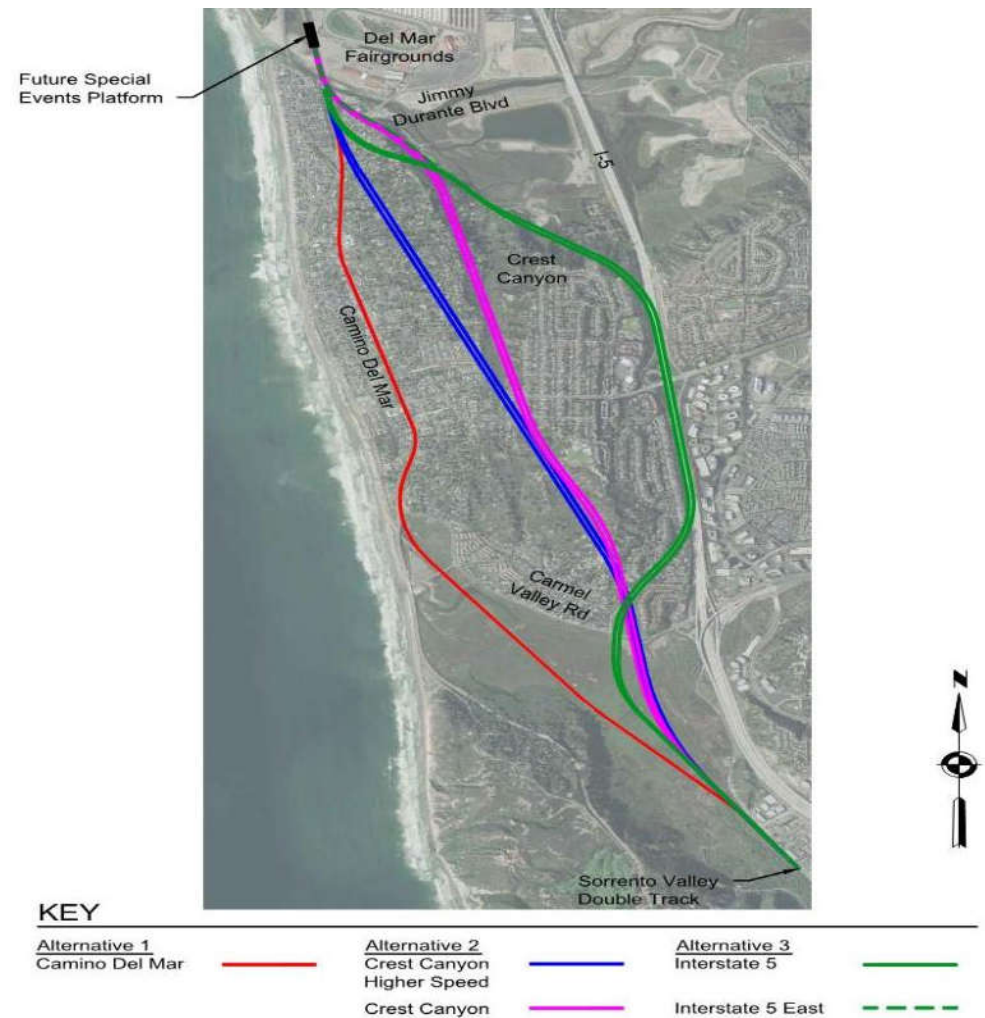


Outfall needs repair and or replacement

# Long Term Planning - Del Mar Tunnel Alignment Alternatives

Studied 5 alignments from Del Mar Fairgrounds to Sorrento Valley

Conceptual engineering and Environmental Constraints in 2017





# Funding Efforts

- \$100M for Del Mar Bluffs Stabilization Phases 5 and 6
- Phase 5:
  - State TIRCP grant (\$4.9M)
  - Federal SOGR grant (\$11.5M)
  - Federal INFRA, BUILD grants pending
  - Upcoming state grant applications
- Phase 6:
  - Local funds for Environmental Phase
  - USACE Feasibility Study
- Regional Rail Study (including Long-Term Alternatives)

## Projects Funded for Construction

# El Portal Undercrossing – City of Encinitas



## Improvements:

- Install new pedestrian undercrossing at El Portal Street with landscaping

Project Budget: \$9m

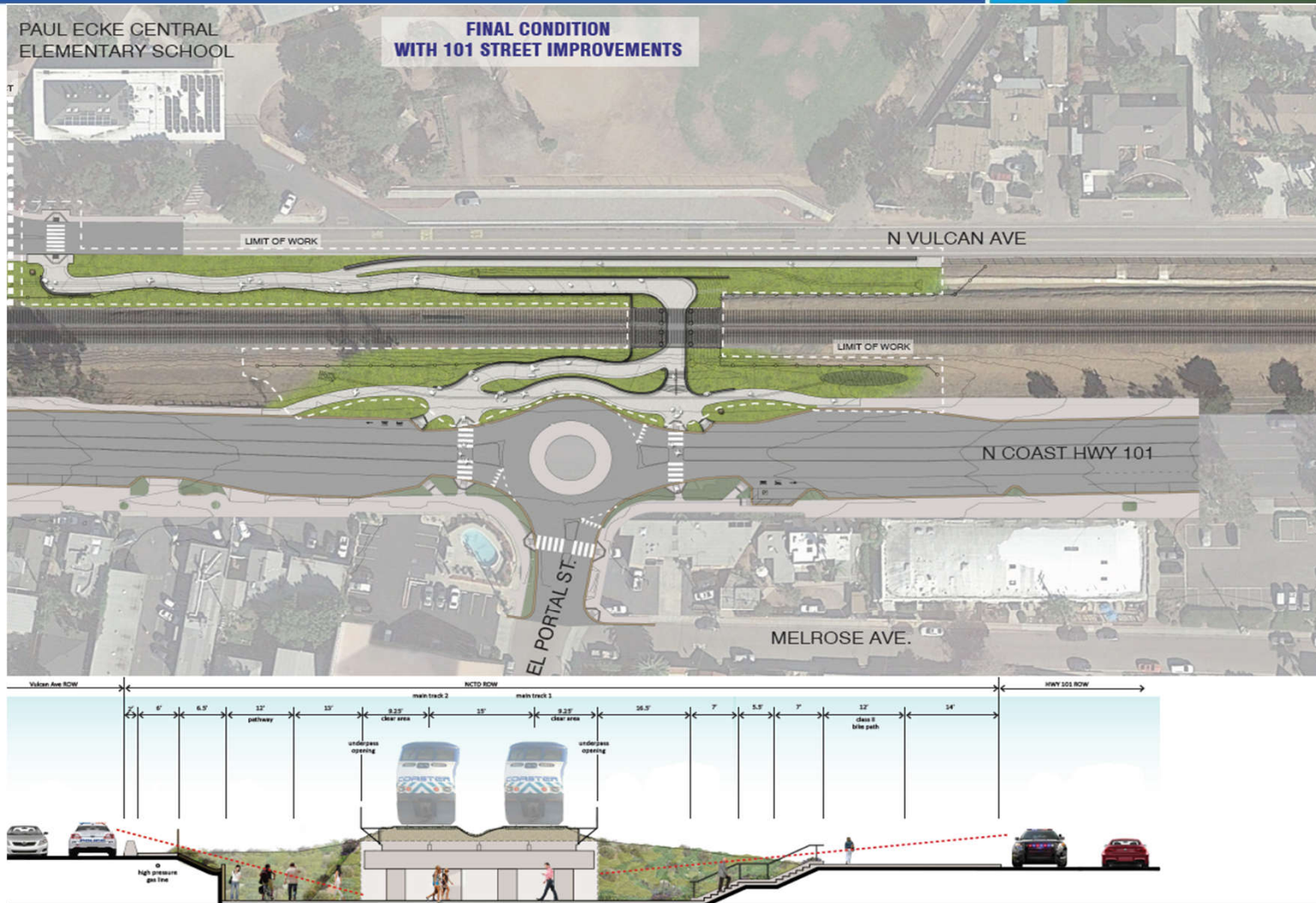
## Project Status:

- Design provided by the City of Encinitas
- Project funded by City of Encinitas with ATP grant.
- Construction to advertise Summer 2020





# El Portal Undercrossing Concept Rendering



## Projects in Design and Permitting

# San Onofre Pulgas Double Track 2



## Improvements:

- Add 1.5 miles passing track
- New bridges at Las Pulgas Road and Las Flores Creek

Project Budget: \$36m

## Project Status:

- Environmental permitting complete
- Design has been reinitiated
- Construction to start after Red Beach Bridge is replaced by NAVFAC





# Eastbrook to Shell on San Luis Rey River

## Improvements:

- Add 0.6 mile of double track
- Replace Bridge 225.4 over San Luis Rey River

## Project Cost: \$85m

- Funds available: \$10.5m

## Project Status:

- Final design & permitting in progress



# Carlsbad Village Trench Alternatives

## Trench alternatives:

- 6,000 ft long trench with 6 overpasses
- 8,400 ft long trench with 7 overpasses

## Project Estimates:

- Short Trench: \$245 - \$265m
- Long Trench: \$375 - \$395m

## Project Status:

- Final AA report and 10% design completed in May 2020





# Batiquitos Lagoon Double Track



## Improvements:

- Add 0.6 miles of double track
- Replace Bridge 234.8 Over Batiquitos Lagoon

## Project Cost: \$104m

- Funds available: \$14.5m

## Project Status:

- Final design & permitting in progress





# San Dieguito Double Track and Special Events Platform Project



## Improvements:

- Add 1.7 miles of double track
- Replace bridge 243.0
- Add special events platform

Project Cost: \$246m

- Funds available: \$14m

## Project Status:

- Final Design in progress
- Environmental Permitting complete
- Phase 1 – Trench Work (\$57m)



# Sorrento Miramar Phase 2



## Improvements:

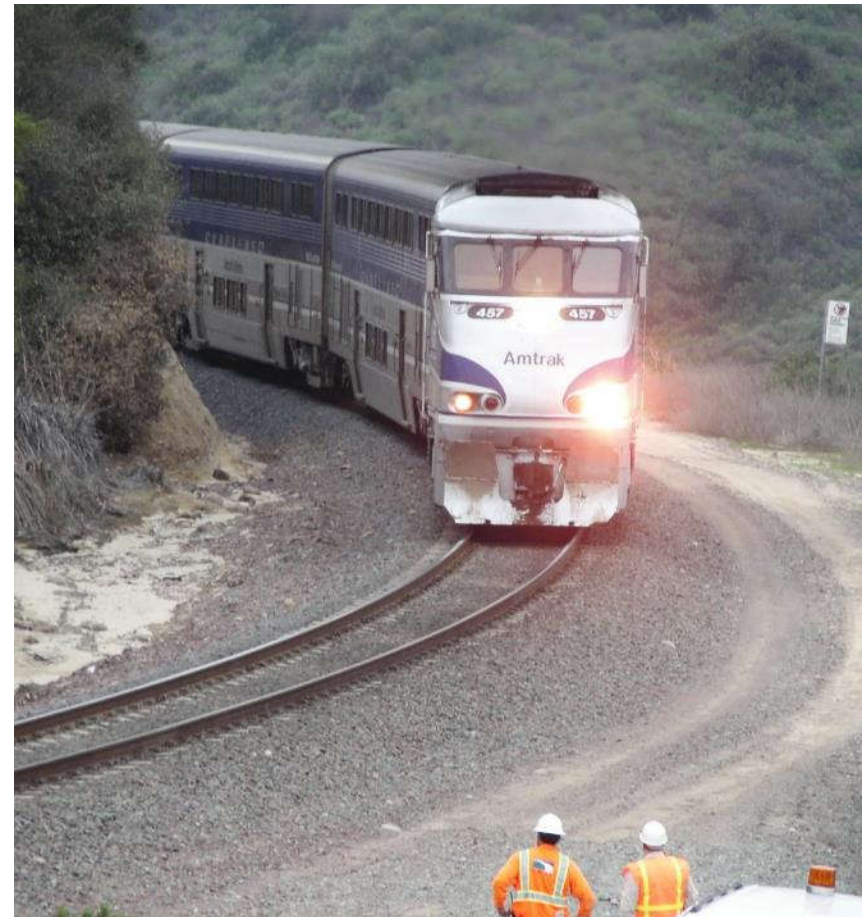
- Add 2 miles of double track
- Straighten 25 mph curves
- Increase speeds

## Project Cost: \$228m

- Funds available: \$29m

## Project Status:

- Final design & permitting in progress



# LOSSAN Coastal Rail Corridor



**Project Info:** [KeepSanDiegoMoving.com/LOSSAN](http://KeepSanDiegoMoving.com/LOSSAN)