



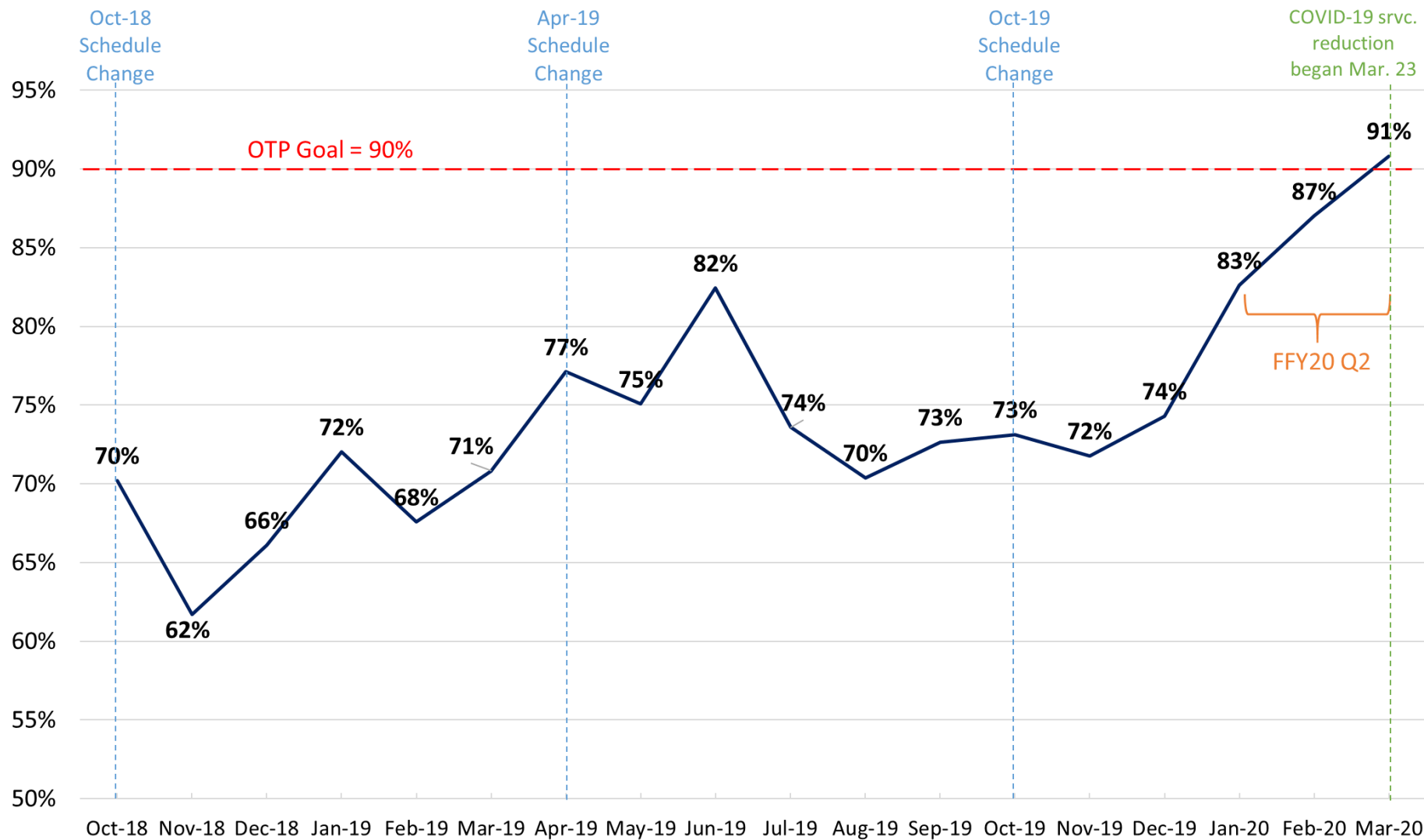
# Pacific Surfliner

## On-Time Performance Analysis

Second Quarter – Federal Fiscal Year 2019-20

Board of Directors  
June 15, 2020

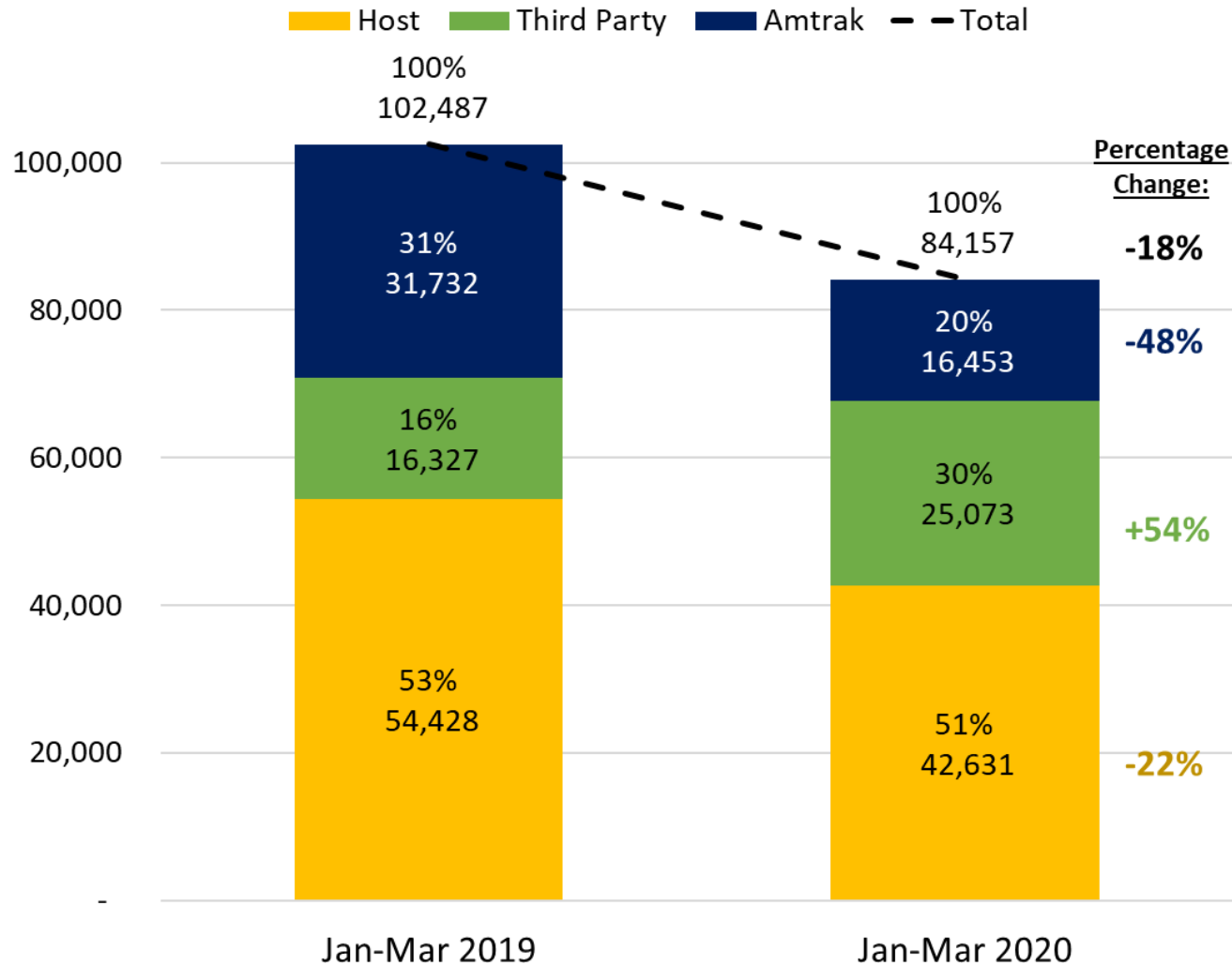
# Monthly Average Endpoint OTP - Systemwide



# FFY20 Q2 Average Endpoint OTP by Train

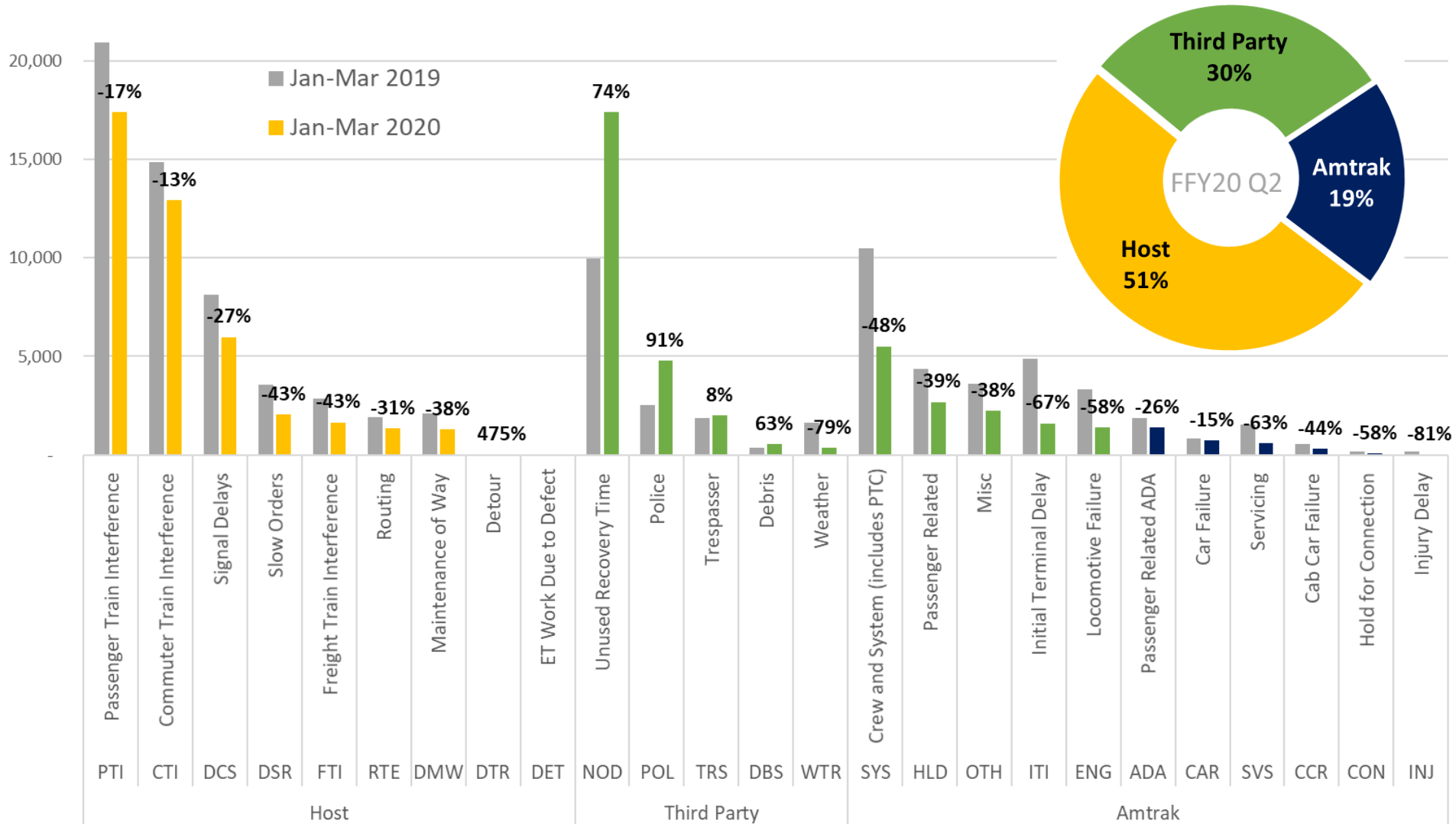
Train	Dep. Stn.	Oct-19 Sch. Chng. Dep Time	Jan-20	Feb-20	Mar-20	3 Mnth. Avg.
561	SAN	4:00 AM	100%	100%	100%	100%
573	SAN	11:15 AM	95%	100%	100%	98%
579	SAN	1:35 PM	97%	93%	97%	96%
1566	LAX	8:19 AM	86%	100%	100%	95%
1573	SAN	10:51 AM	86%	100%	100%	95%
1590	LAX	6:46 PM	86%	100%	100%	95%
566	LAX	8:33 AM	91%	90%	100%	94%
759	LAX	4:09 AM	95%	90%	93%	93%
1584	LAX	5:15 PM	89%	89%	100%	93%
1767	SAN	8:05 AM	89%	89%	100%	93%
768	GTL	6:35 AM	94%	90%	94%	92%
564	LAX	7:02 AM	91%	90%	95%	92%
767	SAN	8:25 AM	91%	90%	95%	92%
565	SAN	6:57 AM	86%	85%	100%	90%
590	LAX	7:21 PM	80%	95%	93%	89%
572	LAX	10:54 AM	86%	95%	87%	89%
1591	SAN	5:25 PM	86%	100%	80%	89%
796	SLO	4:15 PM	81%	90%	94%	88%
583	SAN	2:50 PM	83%	96%	85%	88%
1761	SAN	4:40 AM	78%	100%	86%	88%
1565	SAN	6:45 AM	83%	80%	100%	88%
562	LAX	6:05 AM	83%	84%	95%	87%
591	SAN	5:25 PM	90%	84%	87%	87%
580	LAX	2:58 PM	90%	76%	94%	87%
593	SAN	6:40 PM	81%	86%	90%	86%
792	GTL	4:25 PM	71%	93%	91%	85%
777	SAN	12:05 PM	84%	79%	87%	83%
595	SAN	8:57 PM	71%	90%	86%	82%
569	SAN	9:43 AM	68%	85%	93%	82%
584	LAX	5:15 PM	68%	95%	82%	82%
763	SAN	5:55 AM	71%	86%	87%	81%
774	SLO	6:55 AM	84%	72%	84%	80%
578	LAX	1:15 PM	76%	76%	85%	79%
782	GTL	12:35 PM	77%	76%	82%	78%
1564	LAX	6:52 AM	67%	78%	89%	78%
1569	SAN	9:43 AM	71%	60%	100%	77%
785	SAN	3:58 PM	68%	79%	84%	77%
1572	LAX	11:20 AM	57%	60%	60%	59%
PS System Average			83%	87%	91%	

# Delays by Responsible Party FFY19 Q2 v. FFY20 Q2



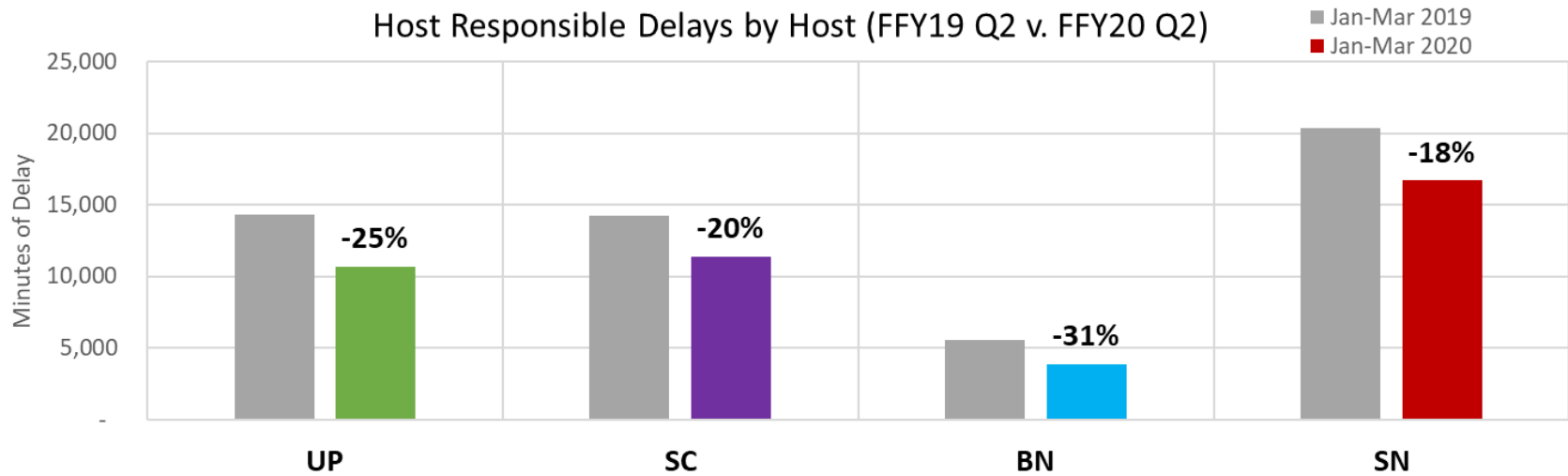
# Delays by Category & Responsible Party

## FFY19 Q2 v. FFY20 Q2

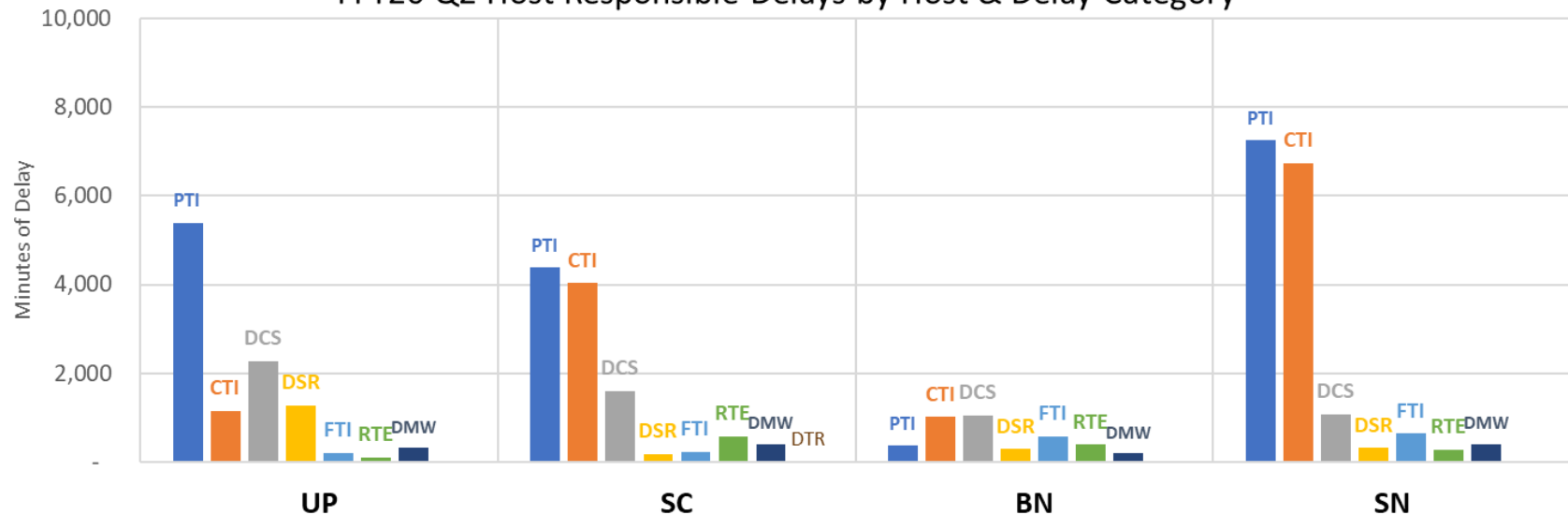


# Host Responsible Delays

Host Responsible Delays by Host (FFY19 Q2 v. FFY20 Q2)



FFY20 Q2 Host Responsible Delays by Host & Delay Category

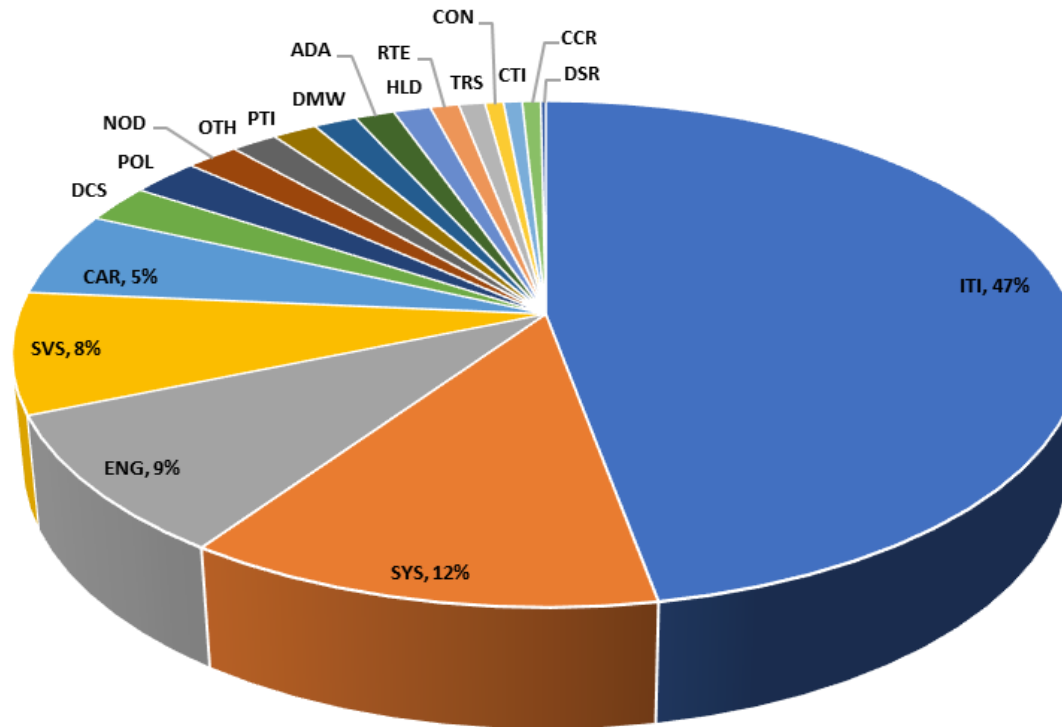




## Initial Terminal Performance (ITP) FFY20 Q2

Train	ITP Delay Mins.	
785	578	17.2%
595	430	12.8%
777	267	7.9%
593	163	4.8%
579	156	4.6%
767	145	4.3%
569	142	4.2%
583	134	4.0%
768	126	3.7%
578	121	3.6%
584	114	3.4%
774	97	2.9%
562	91	2.7%
564	80	2.4%
782	72	2.1%
572	68	2.0%
1564	64	1.9%
792	56	1.7%
1767	56	1.7%
1761	47	1.4%
566	44	1.3%
759	43	1.3%
796	40	1.2%
580	39	1.2%
561	38	1.1%
591	31	0.9%
763	26	0.8%
1569	25	0.7%
1584	15	0.4%
1572	10	0.3%
590	9	0.3%
573	8	0.2%
565	8	0.2%
1591	6	0.2%
1573	6	0.2%
1590	4	0.1%
1566	2	0.1%
1565	1	0.0%
Total	3,362	100%

- Train 785 was responsible for about 17% of total ITP delays.



**Host**

CTI	Commuter Train Interference
DCS	Signal Delays
DET	ET Work Due to Defect
DMW	Maintenance of Way
DSR	Slow Orders
DTR	Detour
FTI	Freight Train Interference
PTI	Passenger Train Interference
RTE	Routing

**Amtrak**

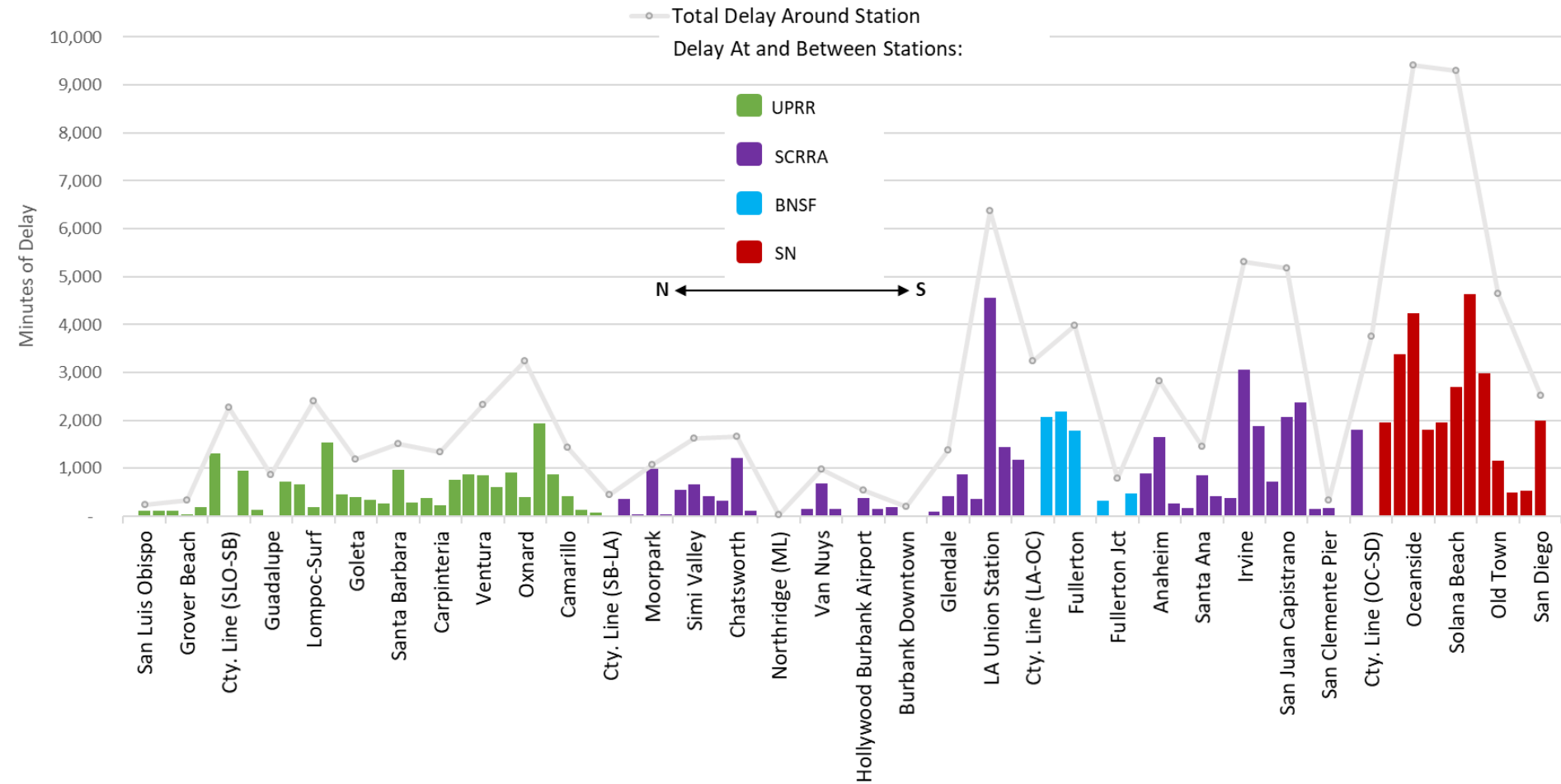
ADA	Passenger Related ADA
CAR	Car Failure
CCR	Cab Car Failure
CON	Hold for Connection
ENG	Locomotive Failure
HLD	Passenger Related
INJ	Injury Delay
ITI	Initial Terminal Delay
OTH	Misc
SVS	Servicing
SYS	Crew and System

### Third Party

DBS	Debris
NOD	Unused Recovery Time
POL	Police
TRS	Trespasser
WTR	Weather

# Total Delay Distribution – By Location

FFY20 Q2 (Jan-Mar 2020) Total Delay Distribution by Location





# Conclusions – FFY20 Q2

- OTP improved in FFYQ2, and during COVID-19 reduced service schedule, systemwide OTP performing above 90 percent OTP goal.
- Amtrak and host-responsible delays decreased by 48% and 22%, respectively, and third party-responsible delays increased by 54% in FFY20 Q2 vs. FFY19 Q2.
- Overall, total minutes of delay decreased by 18% in FFY20 Q2 vs. FFY19 Q2.

# Questions