

Coachella Valley Rail Project Update

LOSSAN Update 2025

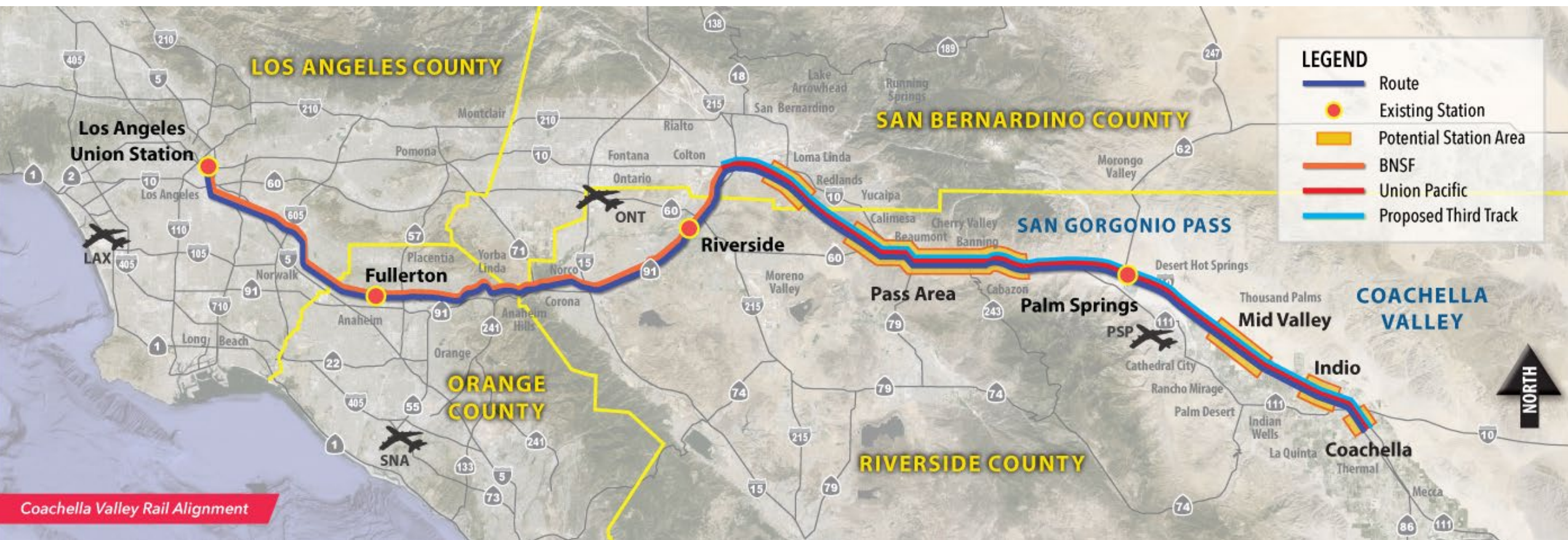
Aaron Hake

Executive Director

Riverside County Transportation Commission



Coachella Valley Rail Corridor



By the Numbers...

144 **MILES** 
Route Length

► **SoCal Population**
24 Million

► **Inland Empire Population**
4.65 Million



Running Time
Los Angeles to Coachella Valley



 No. of **Proposed Station Stops** 9

► **San Gorgonio Pass Travelers**
160,000 / Day

Key Benefits of Coachella Valley Rail?

- ✓ **Connections** – Links LA, Orange, San Bernardino, Riverside counties
- ✓ **Access & Equity** – Options for residents in disadvantaged communities
- ✓ **Economic Investment** – Expands access to the regional economy/Job Growth
- ✓ **Sustainability** – Combats climate change by reducing vehicle use
- ✓ **Destinations** – Coachella & Stagecoach Music Festivals, Indian Wells Tennis, New Arena



Coachella Valley Rail Proposed Service

- ✓ Initial operation plan for 2 round trips
- ✓ Future service could grow to 5 round trips
- ✓ Integrated with connections to Pacific Surfliners/Metrolink/Metro
- ✓ Using latest locomotives and equipment at time of implementation
- ✓ Significant rail infrastructure improvements being explored



Historic Timeline

1991-2013

RCTC completed additional feasibility studies

RCTC commits \$5M to Start Alternatives Analysis

Alternatives Analysis Report completed

Approval of Service Development Plan

1991

2013

2015

2016

2021

2022

2023



RCTC completed the first study that evaluated round trips between Los Angeles and Indio



FRA PRCIP grant awarded to Caltrans and RCTC for Service Development Plan and Tier 1/Program EIS/EIR



Draft Tier 1/Program EIS/EIR released to the public

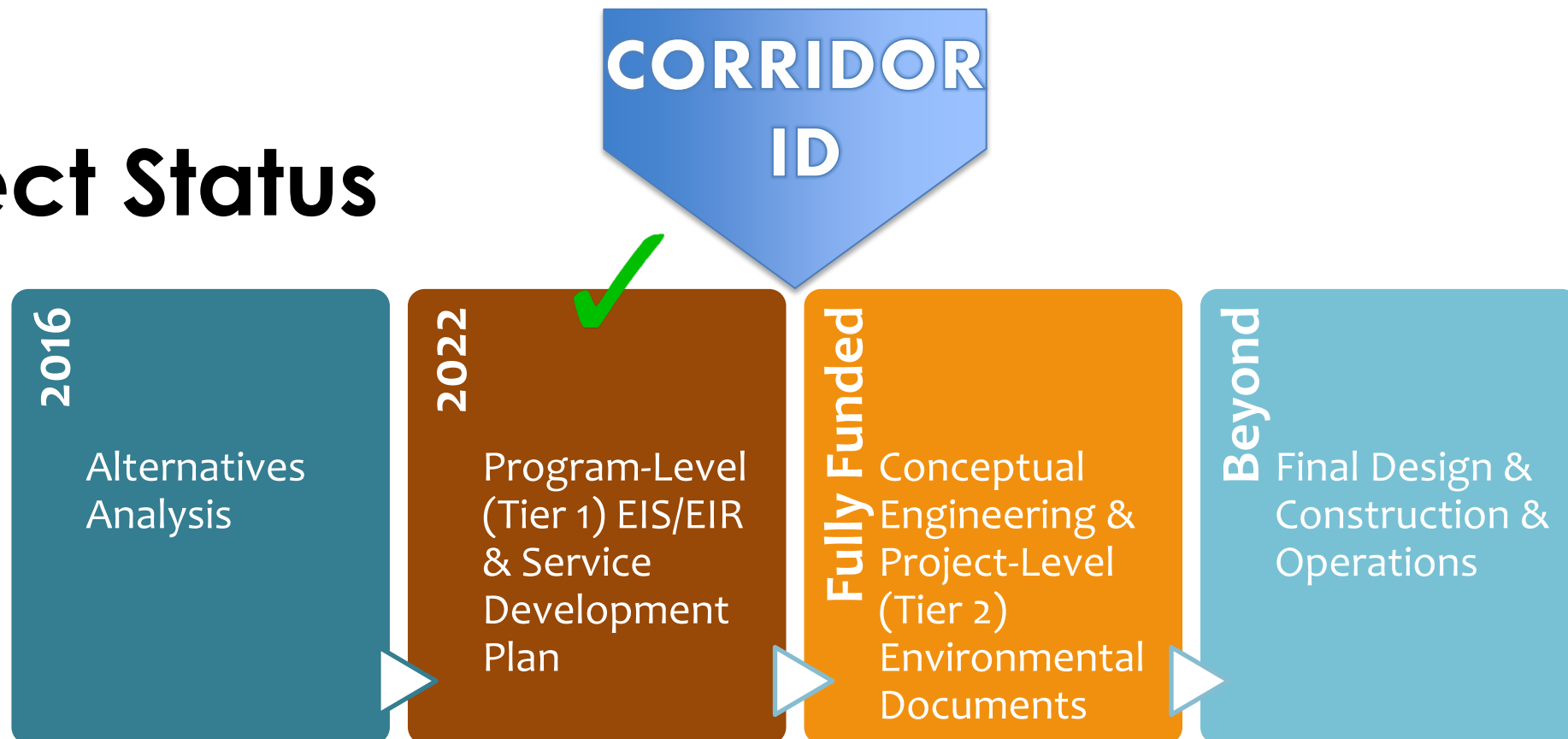


Approval of Final Tier 1/Program EIS/EIR



Selected for Corridor ID

Project Status



- ☒ Program-Level (Tier 1) EIS/EIR/Service Development Plan 2022
- ☐ Corridor ID - Service Development Plan 2.0 (Step 2 prior to Step 3)

Extensive Coordination

- ✓ **Federal Railroad Administration** – Monthly meetings, trips to DC & Sacramento
- ✓ **Caltrans - Division of Rail** – Monthly meetings
- ✓ **LOSSAN/RCTC Meetings**– Monthly meetings
- ✓ **Union Pacific** – Regular meetings

Next Steps

- ✓ City of Coachella Station Study - Ongoing
- ✓ Corridor ID – Service Development Plan to start late 2025
- ✓ Potential CEQA/Pre-NEPA Work to start late 2025

For more on CV Rail Visit



rctc.org



951.787.7141



info@rctc.org



@theRCTC

Project Webpage:
www.rctc.org/cvr

